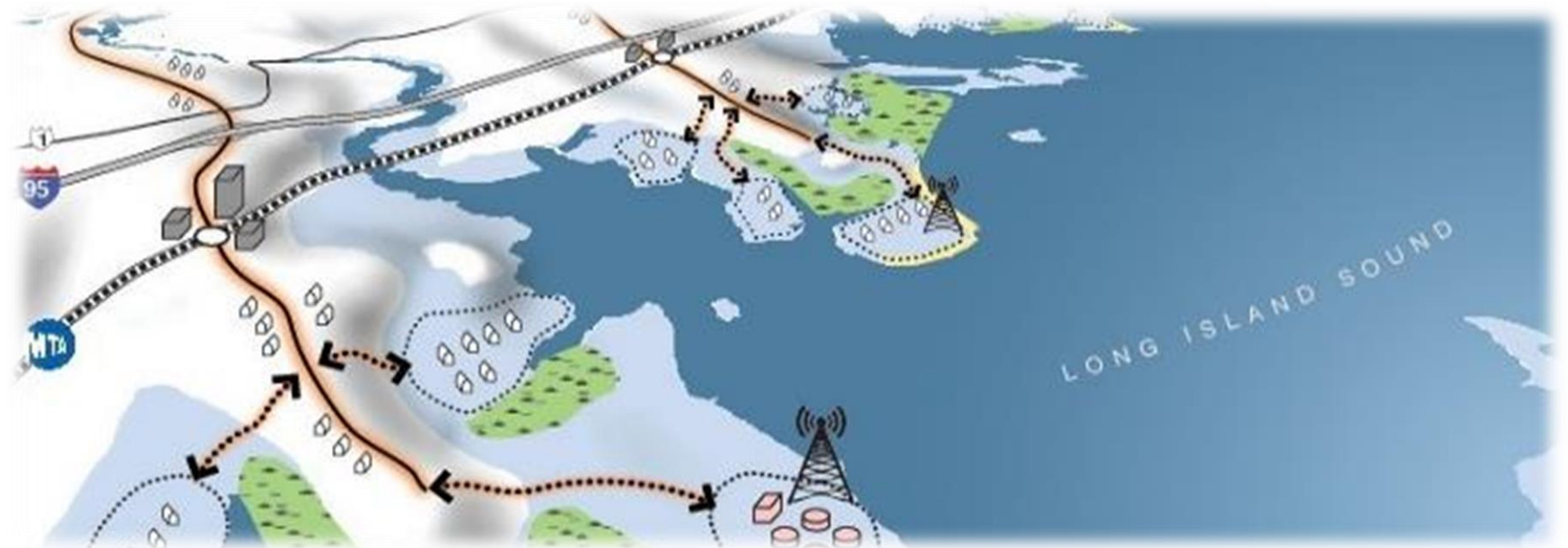


Resilient Connecticut Phase II

Workshop to Discuss Potential Regional Adaptation/Resilience Opportunity Areas

- SCRCOG
✓ May 24, 2021
- MetroCOG
✓ May 25, 2021
- WestCOG
✓ May 26, 2021
- NVCOG
✓ May 27, 2021



Resilient Connecticut Phase II

Potential Regional Adaptation/Resilience Opportunity Areas



Team Present Today

Individual	Role
Victoria Vetre, CFM, SLR Consulting	Presenter and Breakout Room Facilitator
David Murphy, PE, CFM, SLR Consulting	Presenter and Breakout Room Facilitator
Scott Choquette, CFM, Dewberry	Breakout Room Facilitator
Johanna Greenspan-Johnston, Dewberry	Breakout Room Facilitator
Noah Slovin, CFM, SLR Consulting	Zoom Logistics and Breakout Room Controller
John Truscinki, CFM, CIRCA	Facilitator
Joanna Wozniak-Brown, PhD, CIRCA	Facilitator
Yaprak Onat, PhD, CIRCA	Facilitator
Katie Lund, CIRCA	Facilitator

Workshop Objectives

- **Review Methods to Identify Potential Opportunities**
 - ✓ What is a potential adaptation/resilience opportunity area?
 - ✓ How did we link vulnerability mapping with zones of shared risk and regional assets/infrastructure?
- **Breakout Rooms for Discussion about Specific Opportunity Areas**
 - ✓ What does the general profile of areas look like in the region or community that you represent?
 - ✓ Do you have any thoughts about specific areas?
- **Report Out**
 - ✓ What is your impression of the potential opportunity areas?
 - ✓ Did we miss anything?
- **Open Discussion and Next Steps**
 - ✓ What types of adaptation and resilience projects could you imagine in these areas?
 - ✓ How can you participate in the next few steps?

Workshop Schedule

- Review Methods to Identify Potential Opportunities
 - ✓ 1:05 to 1:40 PM
- Breakout Rooms for Discussion about Specific Opportunity Areas
 - ✓ 1:45 to 2:30 PM
- Report Out
 - ✓ 2:30 to 2:40 PM
- Open Discussion and Next Steps
 - ✓ 2:40 to 3:00 PM

Review Methods to Identify Potential Opportunities



Getting Oriented

Recap of Discussion Opportunities

- **Summit of November 2020**
 - ✓ Presented the Results of Resilient Connecticut Phase I
 - ✓ Transition into Phase II of Resilient Connecticut
- **COG-Based Meetings – fall 2020 through Present**
 - ✓ Monthly updates to COGs and COG committees
- **January/February 2021 Workshops**
 - ✓ Vulnerability assessment
 - ✓ Zones of shared risk
- **Webinar of March 2021**
 - ✓ Update on the vulnerability assessment

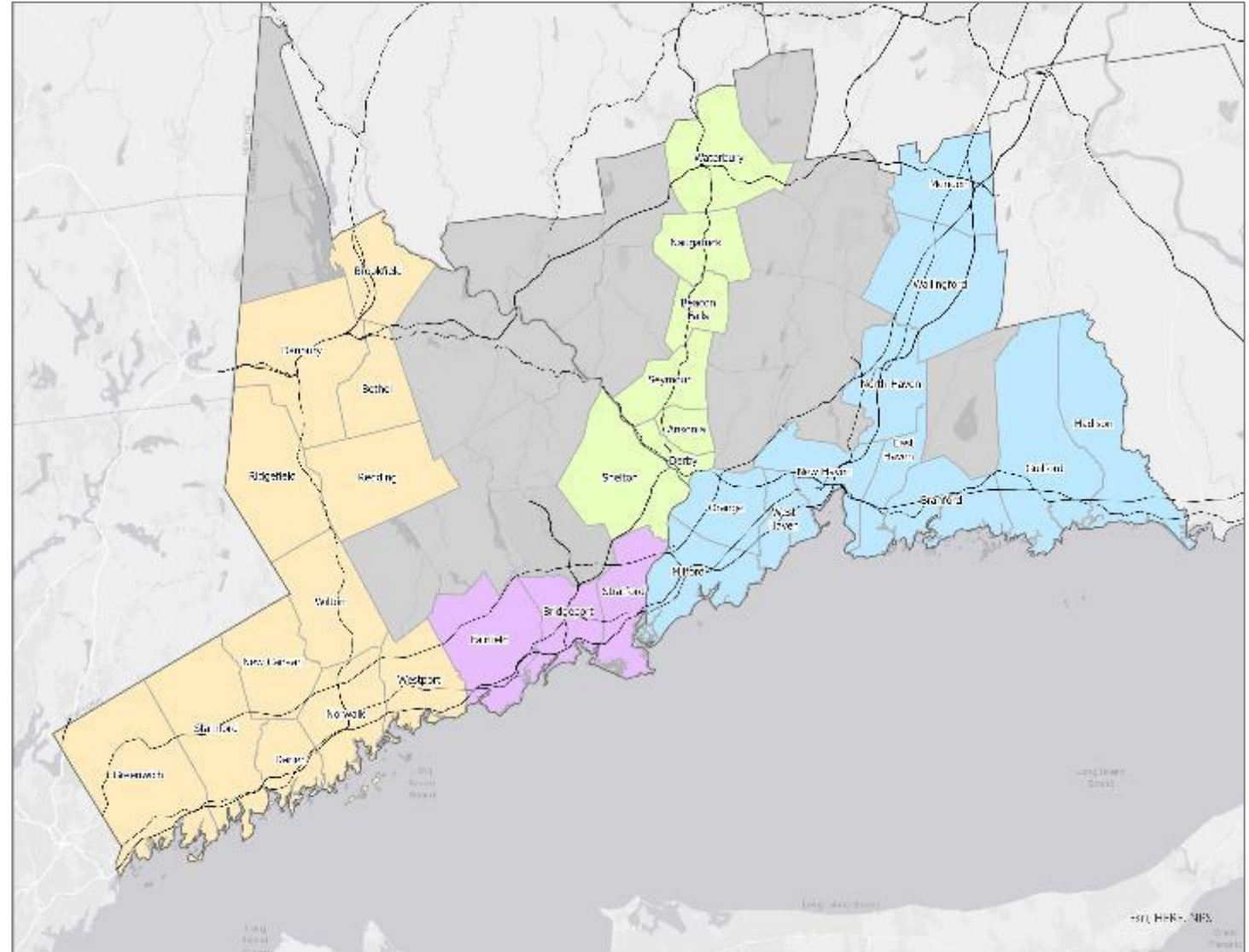
Resilient Connecticut Phase II

Potential Regional Adaptation/Resilience Opportunity Areas

Getting Oriented

Area of Focus

- Fairfield and New Haven Counties
- Communities with Transit-Oriented Development (TOD) Potential
- Communities with “Resilience Corridor” Potential

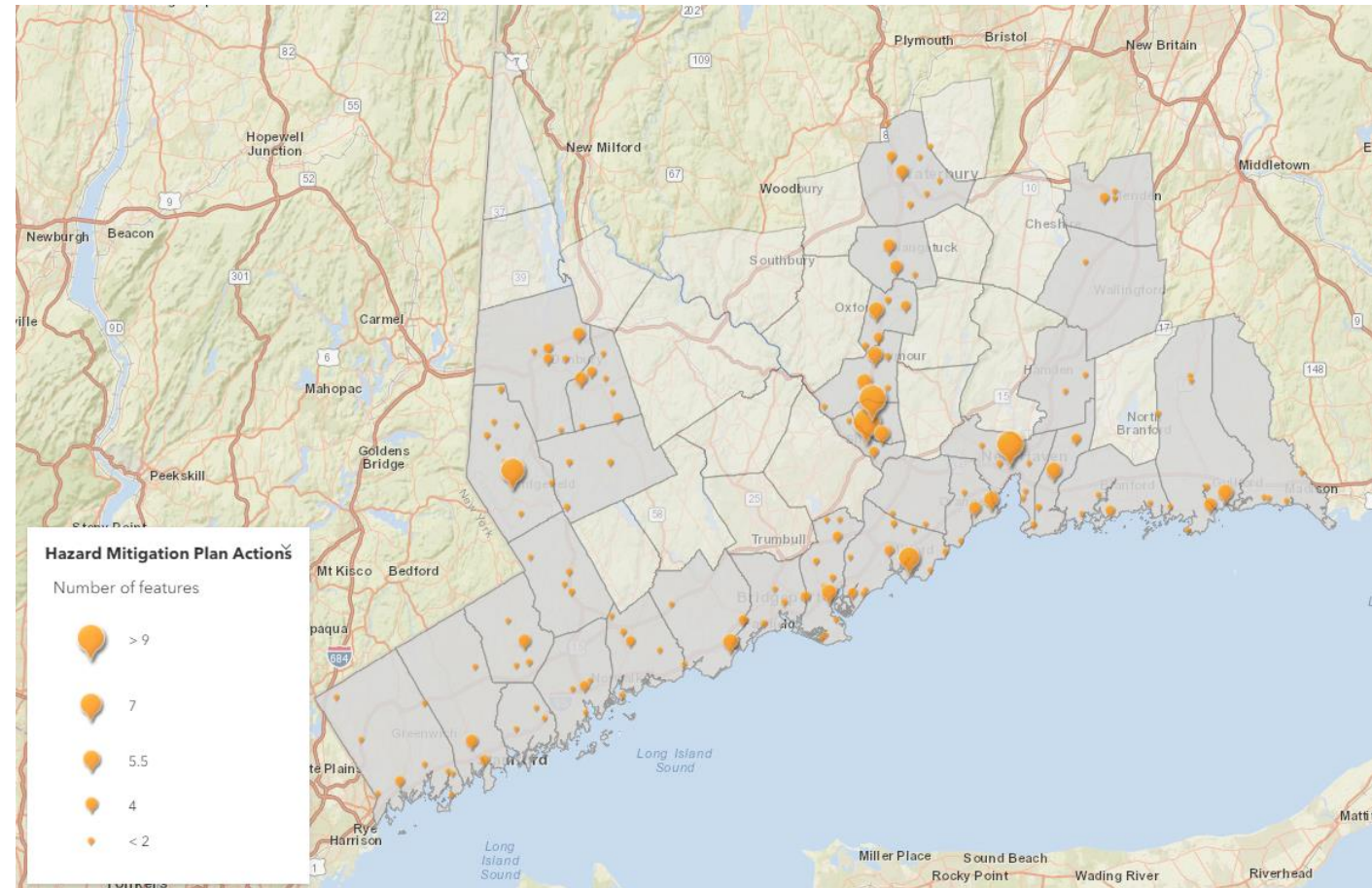


Resilient Connecticut Phase II

Potential Regional Adaptation/Resilience Opportunity Areas

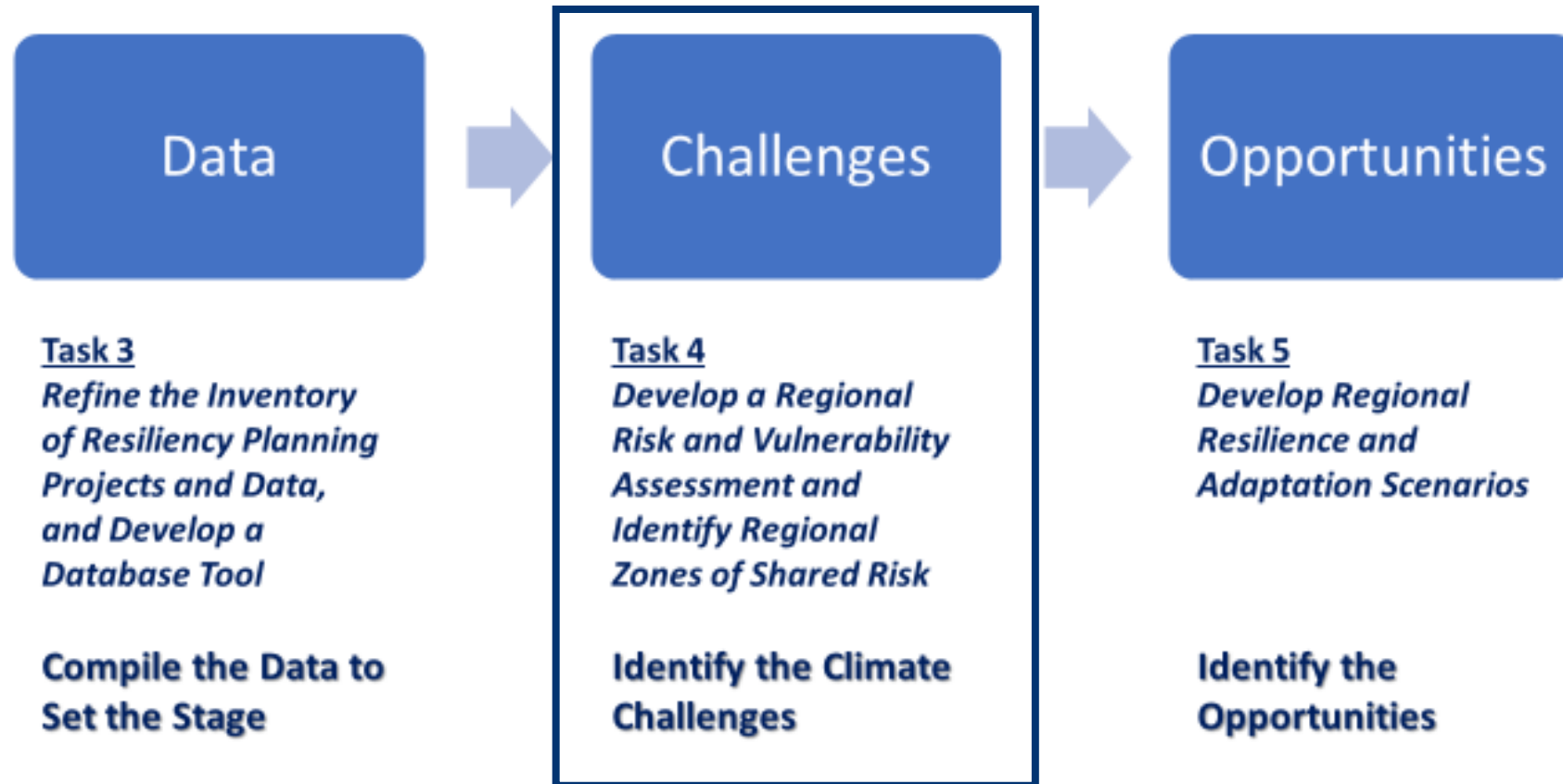
Getting Oriented *Not Starting from Scratch*

- Worked with COGs to collect data
- Resilient Connecticut builds on other planning efforts such as Hazard Mitigation Plans, POCDs, and Community Resilience Building workshops



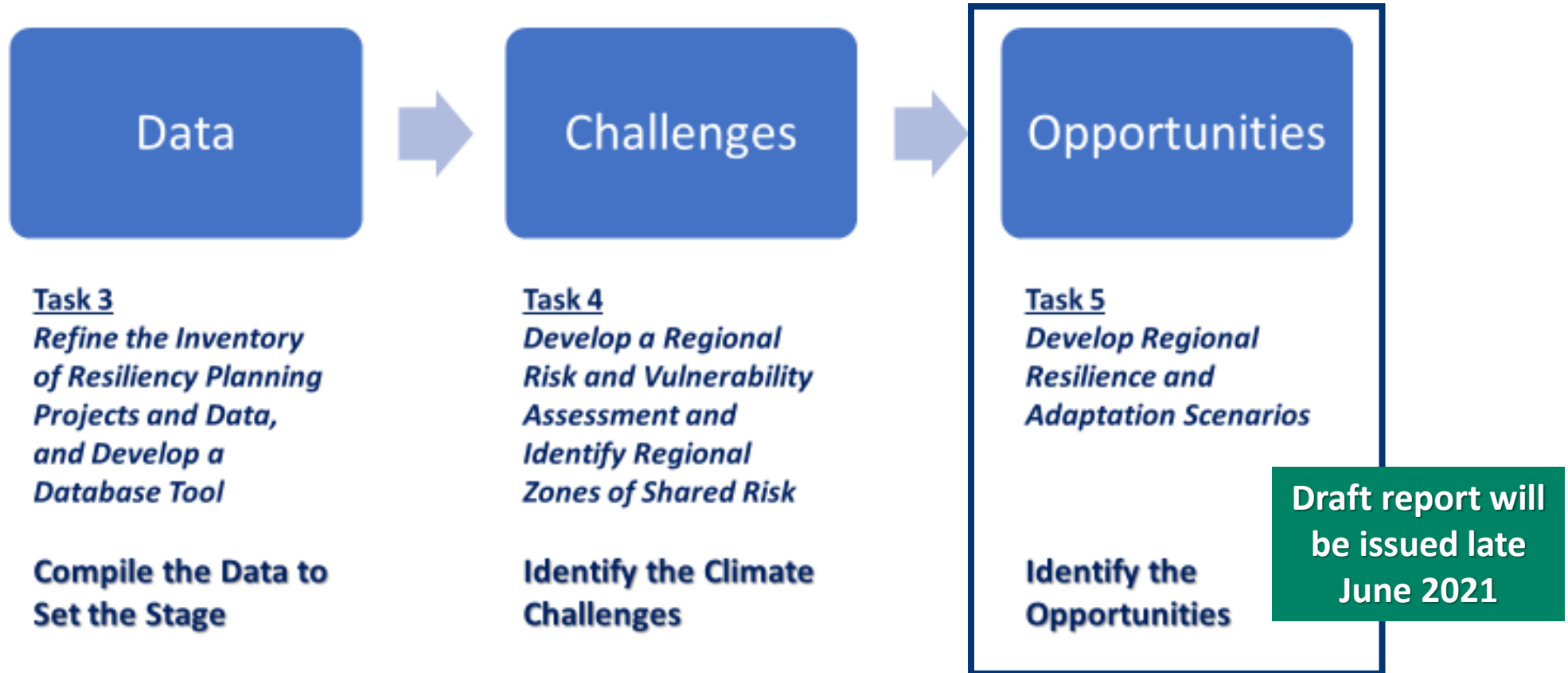
Getting Oriented

Transition from Challenges to Opportunities



Getting Oriented

Transition from Challenges to Opportunities



Getting Oriented

What is a Potential Regional Adaptation/Resilience Opportunity Area?

- **Potential**
 - ✓ Something that has been identified through analysis of vulnerabilities and risks, but we cannot know yet whether this will make it to the end
- **Regional**
 - ✓ Of significance to more than one community; of significance to a COG or the State
- **Adaptation**
 - ✓ Changing over time to address the challenges caused by climate change
- **Resilience**
 - ✓ The ability to prepare, withstand, recover, and adapt
- **Opportunity**
 - ✓ Something positive we can do where a climate-related challenge exists
- **Area**
 - ✓ Are you really reading every bullet on this slide?

Resilient Connecticut Phase II

Potential Regional Adaptation/Resilience Opportunity Areas



Terms to Understand

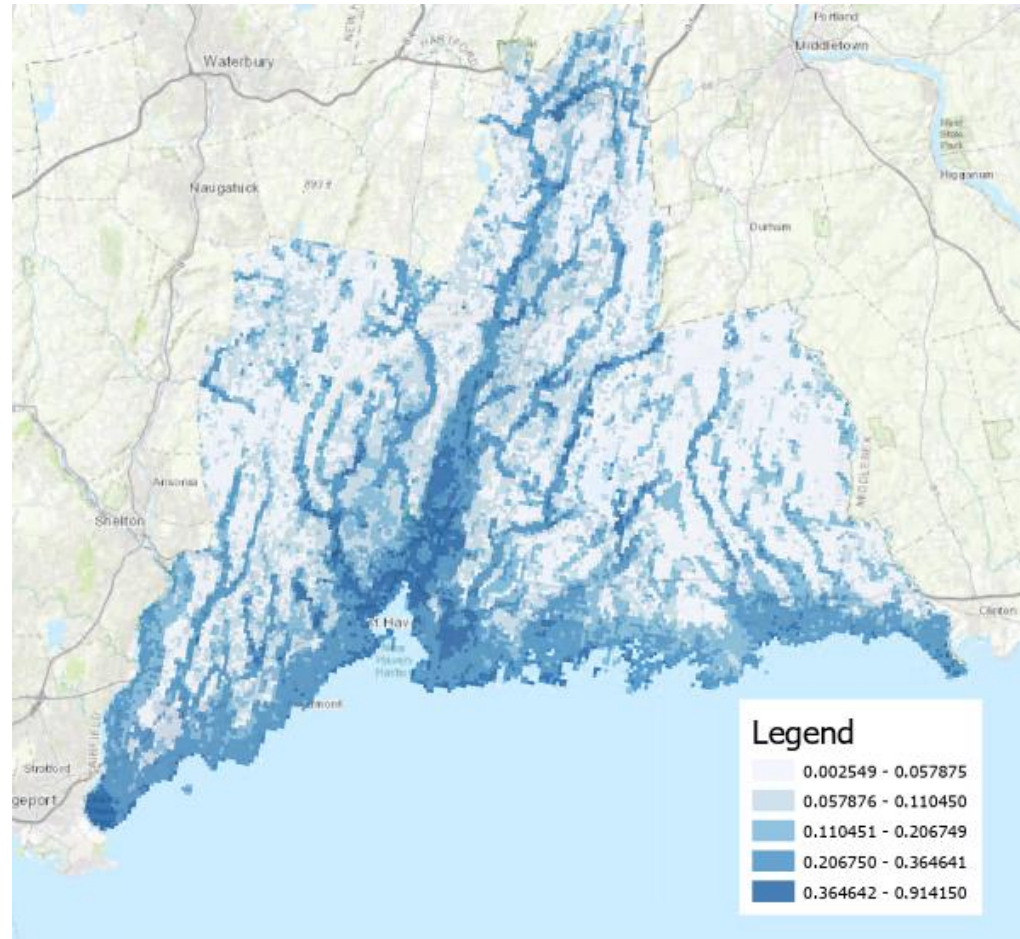
Considerations	Definition
Flood Vulnerability	A contributor to climate risk associated with flooding, this is a combination of flood exposure, flood sensitivity, and flood adaptive capacity.
Heat Vulnerability	A contributor to climate risk associated with heat, this is a combination of heat exposure, heat sensitivity, and heat adaptive capacity.
Social Vulnerability	Factors such as poverty and lack of access to transportation that may weaken a community's ability to prevent losses during a disaster.
Zone of Shared Risk	Areas that face common challenges already, or caused by climate change, and therefore risks are shared among or between groups of people that may have different perspectives and priorities for resilience.
Regional Asset or Infrastructure	Asset or Infrastructure that serves more than one community; or is important to a region.
Area of Planned Development Present	Areas identified in POCDs and RPOCDs for a variety of development and redevelopment.
Federal Opportunity Zone	Opportunity Zones provide tax benefits to people and companies with the goal of investing in urban areas.
Transit-Oriented Development Area	Supports creation of compact, pedestrian-oriented, mixed-use communities centered around train or transit systems.

Resilient Connecticut Phase II

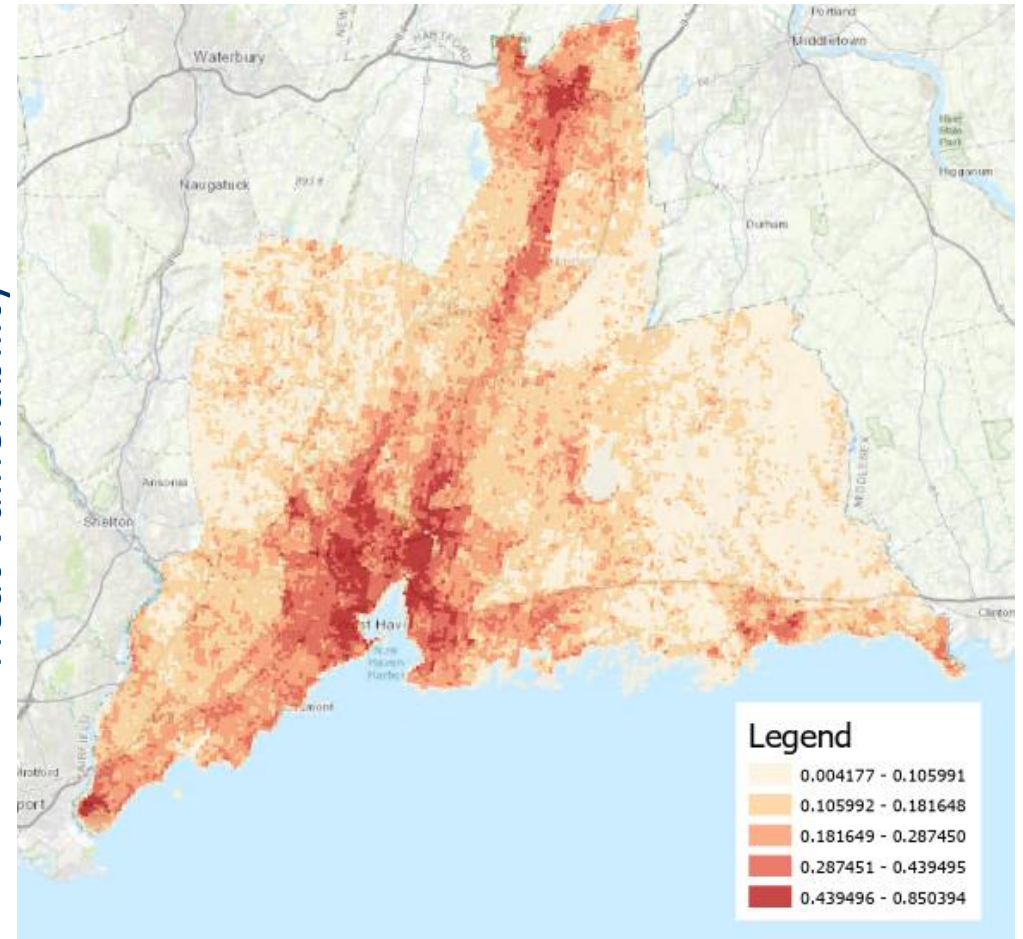
Potential Regional Adaptation/Resilience Opportunity Areas



Flood Vulnerability



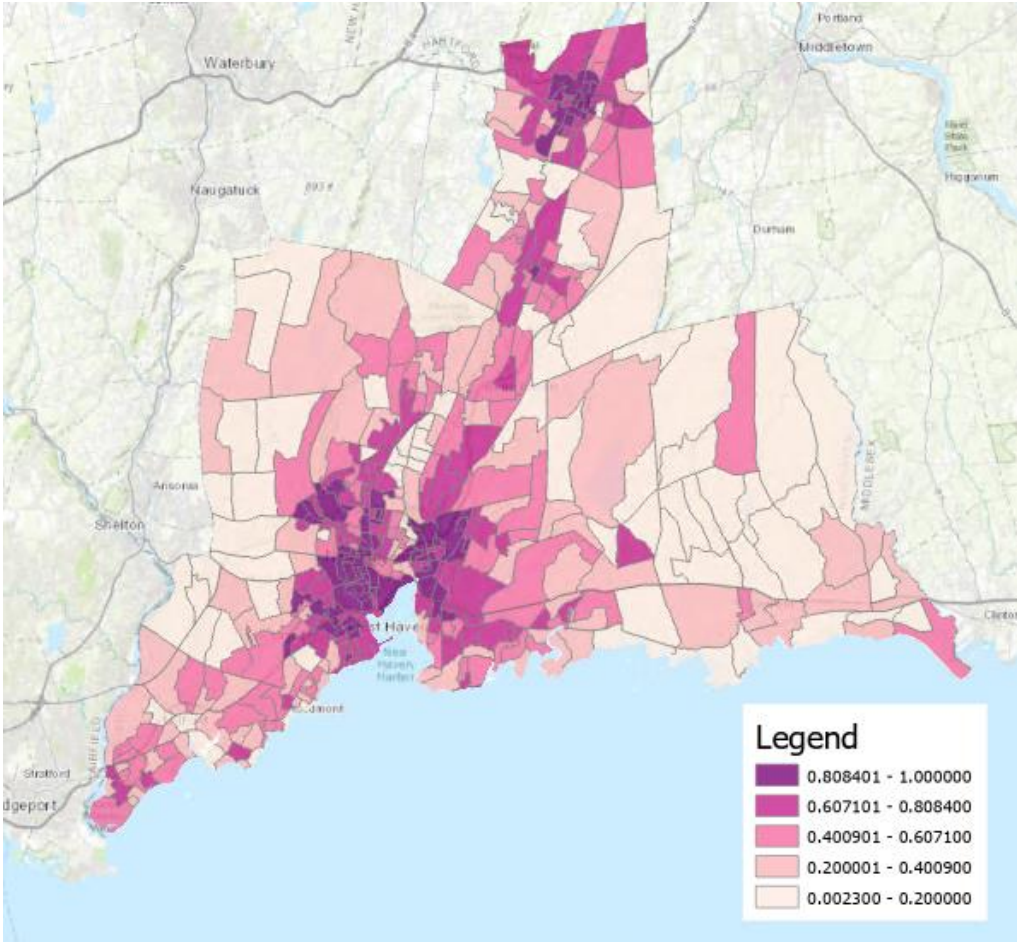
Heat Vulnerability



Resilient Connecticut Phase II

Potential Regional Adaptation/Resilience Opportunity Areas

Social Vulnerability Index



Zones of Shared Risk



Examples of Regional Assets and Infrastructure

Regional Assets and Infrastructure that Serve Numerous Communities by Spanning the Region

- Amtrak
- MetroNorth
- CTRail
- Interstate Highways
- Merritt/Wilbur Cross Parkway
- Route 8
- Route 7
- Route 1
- Major Water Systems such as Aquarion Water Company and Regional Water Authority
- GHNWPCA and other Major Sewer Systems
- Eversource and UI transmission

And more...

Regional Assets that Serve Numerous Communities from One Location

- State facilities
 - State facilities like courthouses, public safety facilities, State police facilities
 - CT DOT highway garages
- Hospitals
- Major Ports
 - New Haven
 - Bridgeport
 - Stamford
- Airports
- Danbury Mall Mass Distribution Facility and similar
- UConn branches
- Colleges in the CSCU System such as Gateway CC and SCSC

And more...

Regional Economic Assets that Serve Numerous Communities from One Location

- Major employers
- Major employment areas
- Large tourist sites and museums
- Historic districts
- Long Wharf area
- Steel Point area
- Retail shopping malls

And more...

Resilient Connecticut Phase II

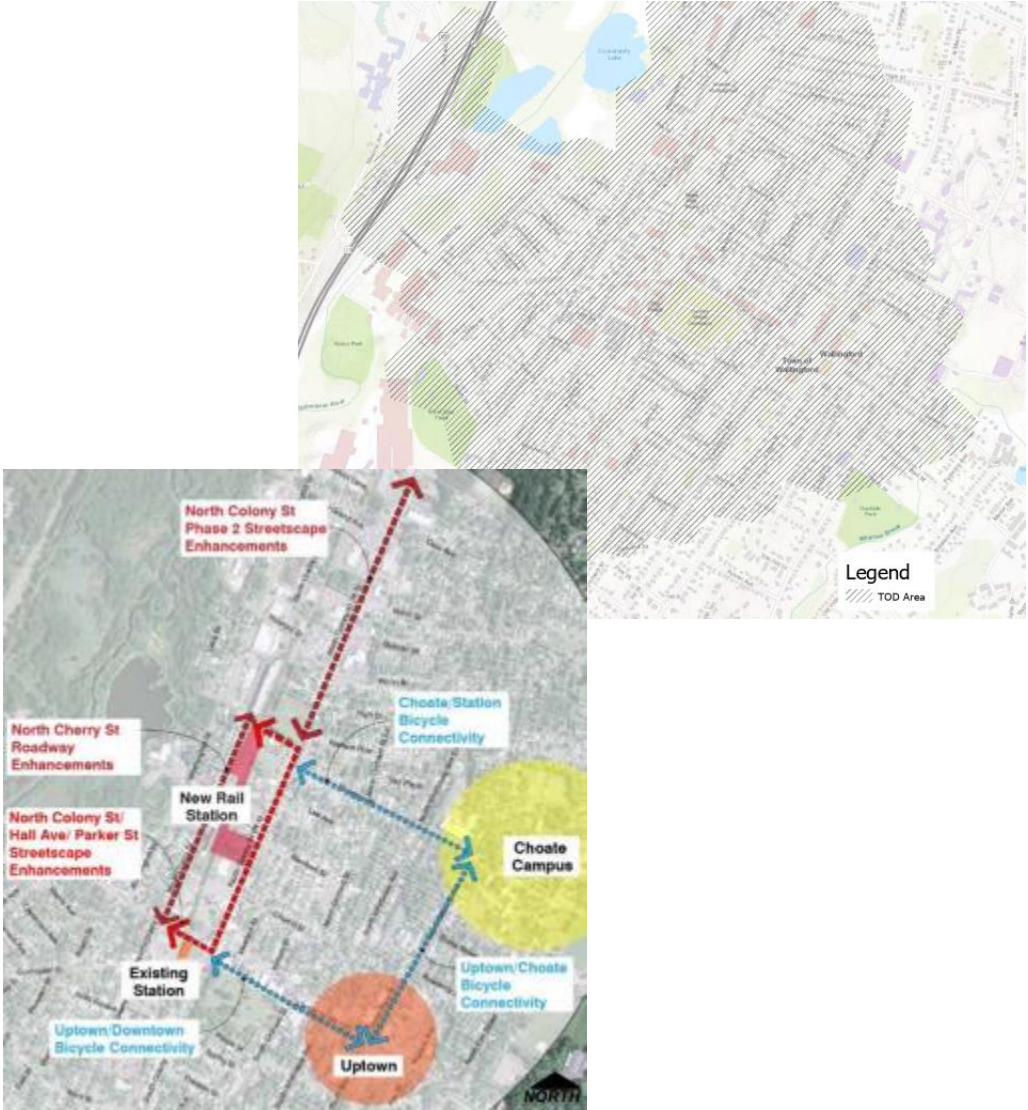
Potential Regional Adaptation/Resilience Opportunity Areas



Planned Development Area



Transit-Oriented Development Area



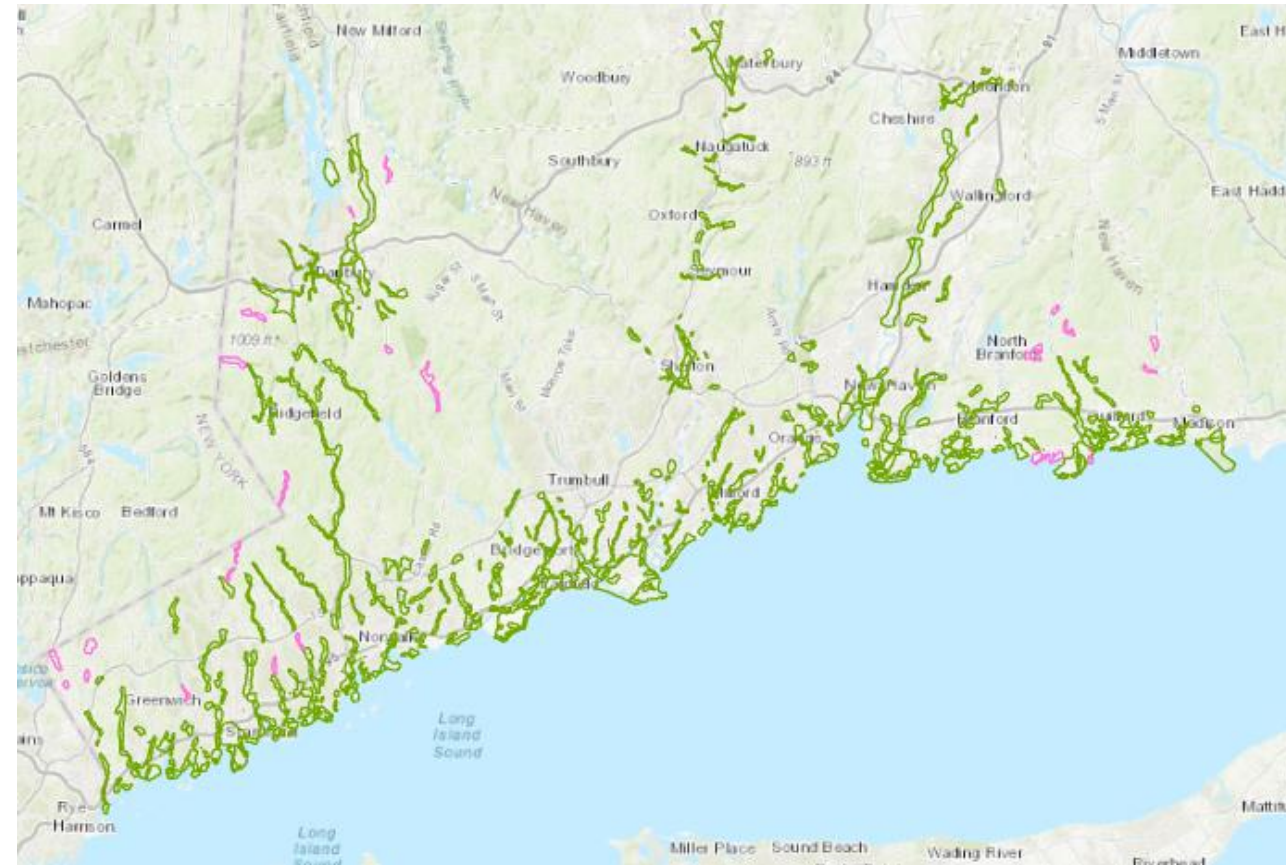
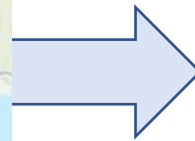
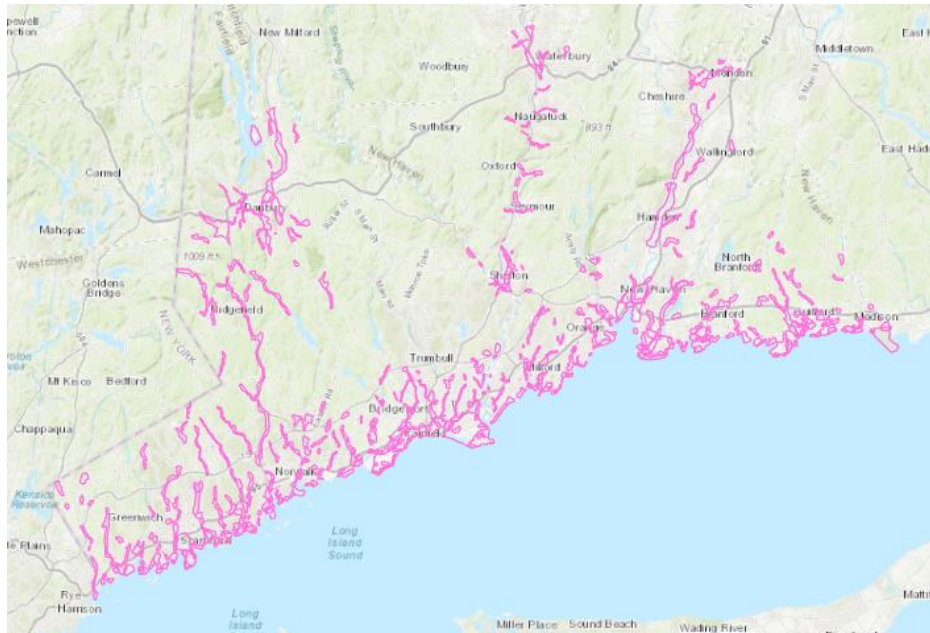
Resilient Connecticut Phase II

Potential Regional Adaptation/Resilience Opportunity Areas



Overlay and Score Process

- Linked Regional Assets with ZSR
 - ✓ Of 656 ZSR, 626 are “regional”



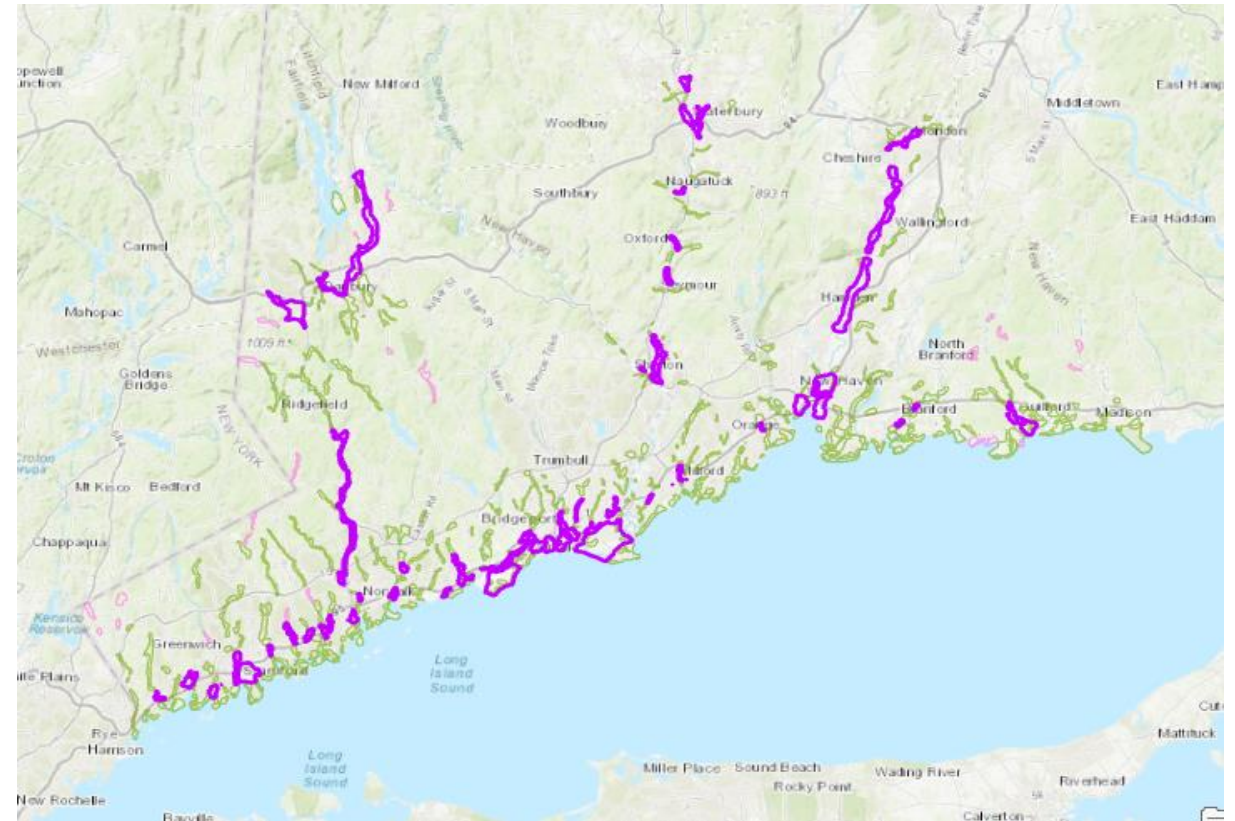
Resilient Connecticut Phase II

Potential Regional Adaptation/Resilience Opportunity Areas



Overlay and Score Process

- **Linked Regional Assets with ZSR**
 - ✓ Of 656 ZSR, 626 are “regional”
- **Identified top 20% of RZSR**
 - ✓ Based on number of assets in each RZSR
 - ✓ 86 in top 20% - have between 6 and 16 assets



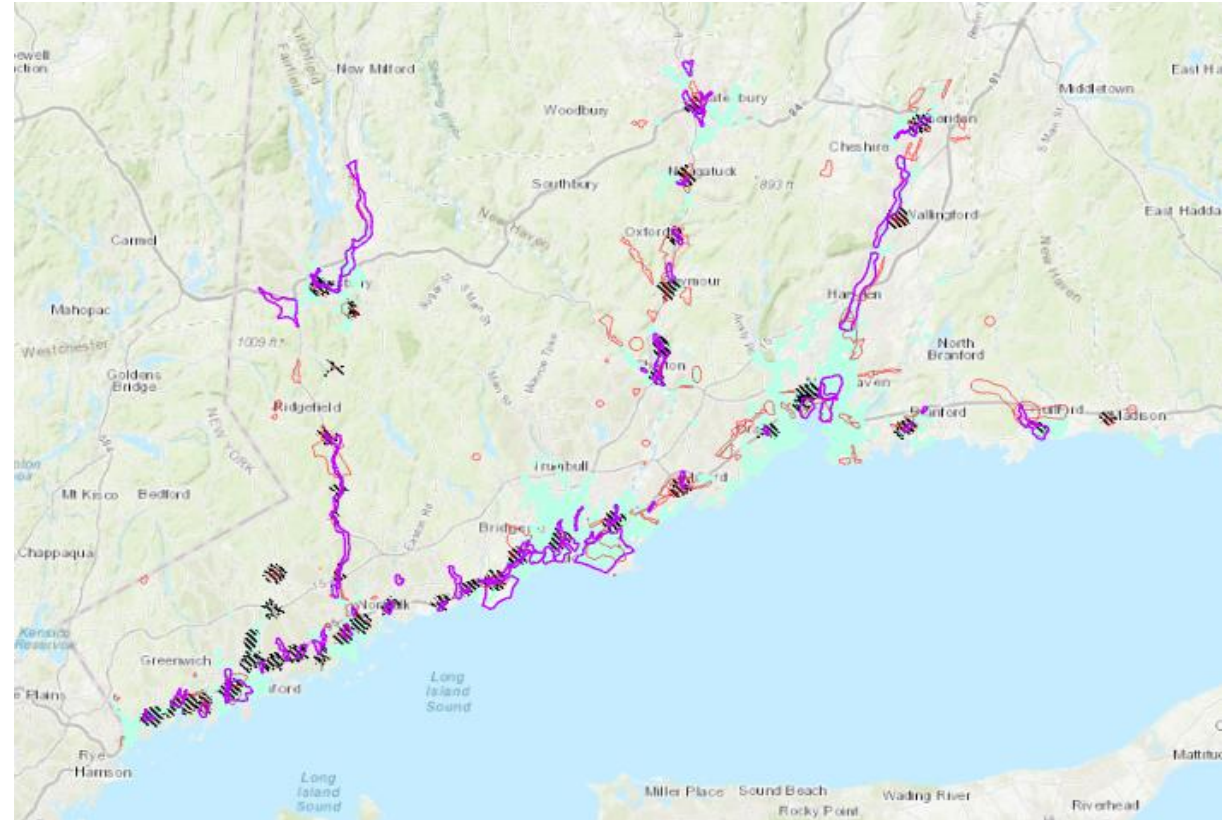
Resilient Connecticut Phase II

Potential Regional Adaptation/Resilience Opportunity Areas



Overlay and Score Process

- **Linked Regional Assets with ZSR**
 - ✓ Of 656 ZSR, 626 are “regional”
- **Identified top 20% of RZSR**
 - ✓ Based on number of assets in each RZSR
 - ✓ 86 in top 20% - have between 6 and 16 assets
- **Identified intersection of top RZSR and:**
 - ✓ High flood/high heat scenario
 - ✓ TOD areas
 - ✓ Planned future development



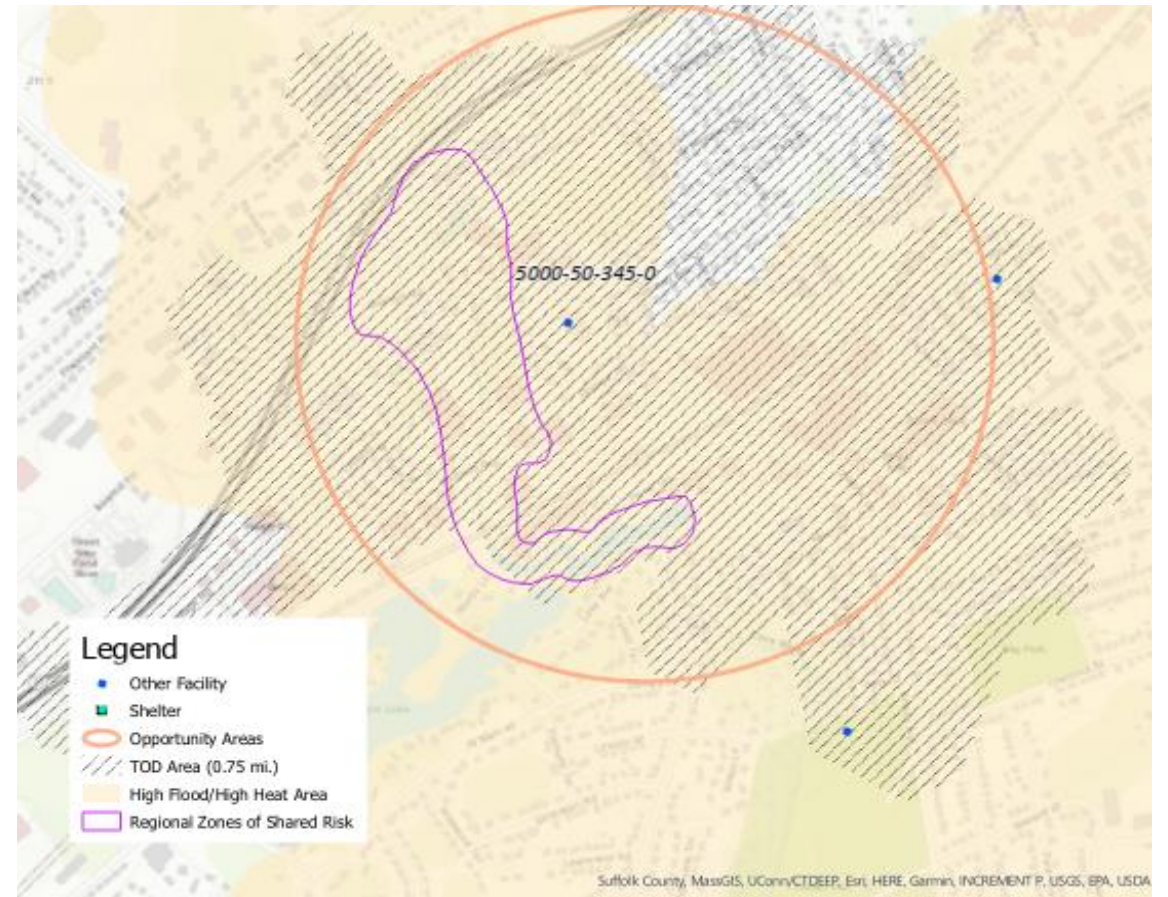
Resilient Connecticut Phase II

Potential Regional Adaptation/Resilience Opportunity Areas

Tier 1 and Tier 2

Not base on priority, just the process

- Tier 1 intersection, typically all align:
 - ✓ RZSR
 - ✓ High flood/high heat
 - ✓ TOD



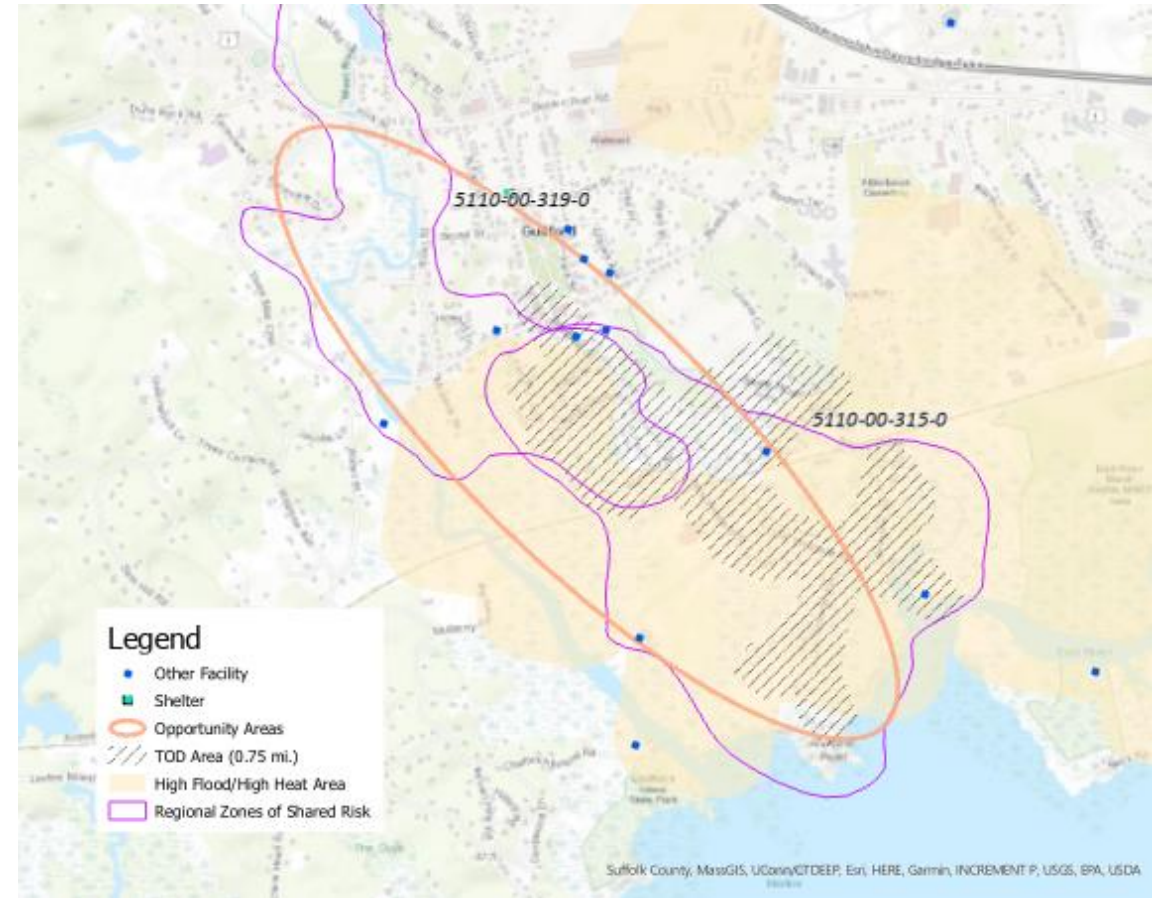
Resilient Connecticut Phase II

Potential Regional Adaptation/Resilience Opportunity Areas

Tier 1 and Tier 2

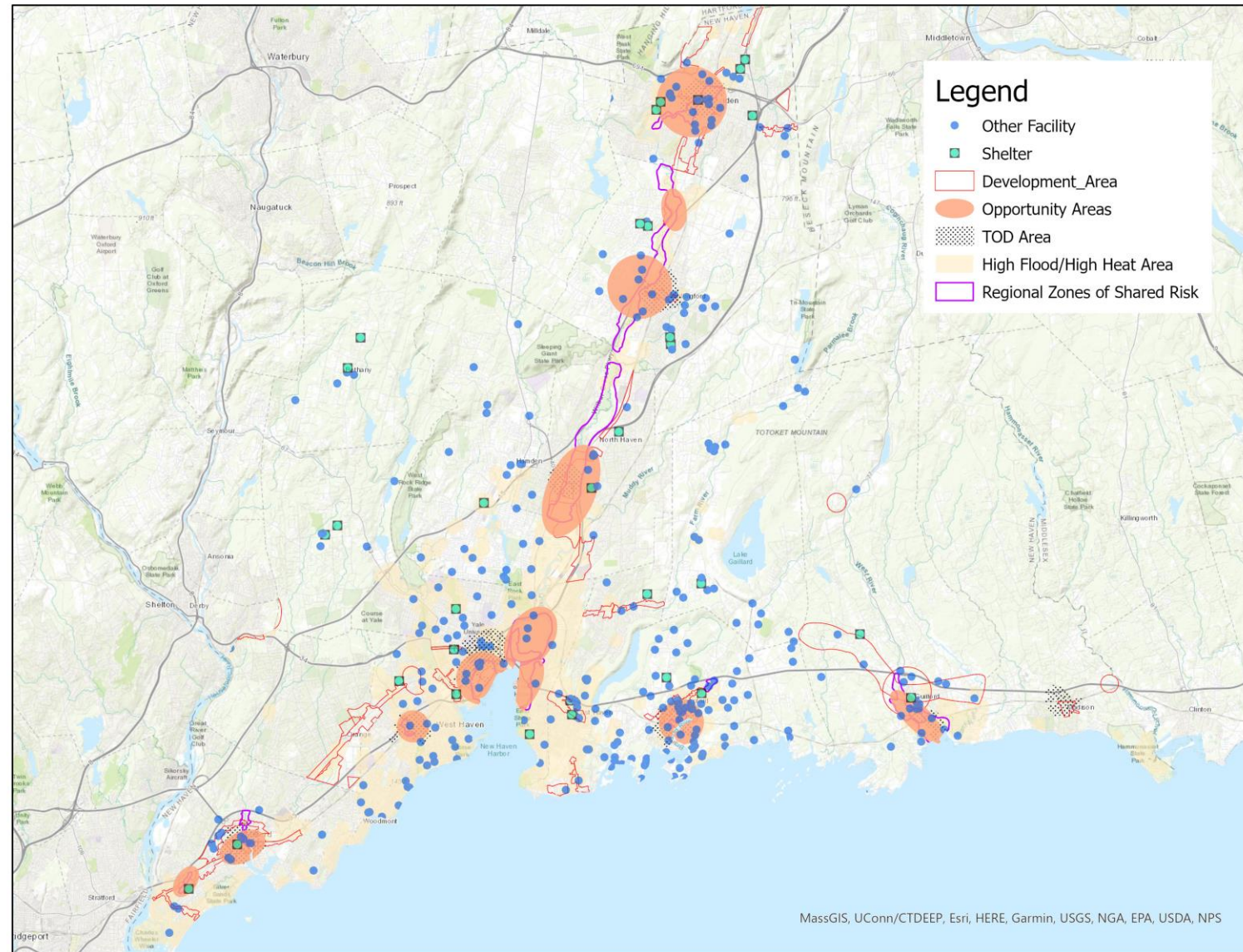
Not base on priority, just the process

- Tier 1 intersection, typically all align:
 - ✓ RZSR
 - ✓ High flood/high heat
 - ✓ TOD
- Tier 2, not perfectly aligned:
 - ✓ Contains RZSR
 - ✓ Proximity to TOD
 - ✓ Not fully encompassed by high flood/high heat



Resilient Connecticut Phase II

Potential Regional Adaptation/Resilience Opportunity Areas



Breakout Rooms for Discussion About Specific Areas



Resilient Connecticut Phase II

Potential Regional Adaptation/Resilience Opportunity Areas



- Here are some **reminders** for our discussion:
 - ✓ Regional adaptation/resilience opportunity areas are the geographic locations that our team has identified based on overlays of **flood vulnerability, heat vulnerability, social vulnerability, zones of shared risk, and regional assets and infrastructure.**
 - ✓ Each potential regional adaptation/resilience opportunity area identified in the region is depicted on an **individual page.**
- Here are some **hints** for our discussion:
 - ✓ **Scores** associated with the flood, heat, and social vulnerabilities are relative scores. A score of “0.9” in one opportunity area demonstrates higher vulnerability than a score of “0.5” in a nearby opportunity area.
 - ✓ **ID numbers** for the zones of shared risk include a watershed ID. For example, “5206” is the Harbor Brook watershed.
 - ✓ **“Areas of planned development”** have been gathered from community plans, but the names that we selected for these information sheets are a work in progress.

What should you keep in mind while discussing resilience opportunity areas?

- ✓ Are there other assets in a particular area that may have been overlooked?
- ✓ Is there a resource or asset located *outside* of this area that alleviates some vulnerability?
- ✓ Is there a specific **flood** or **heat** risk location that comes to mind?
- ✓ Are there any other planning efforts occurring in a specific opportunity area?

Resilient Connecticut Phase II

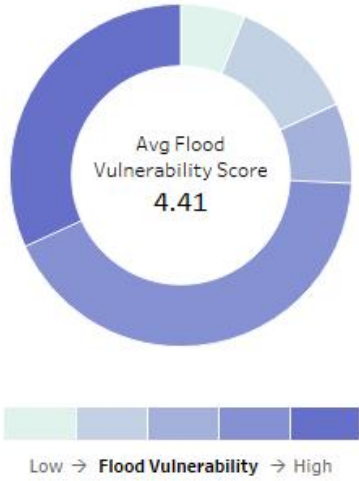
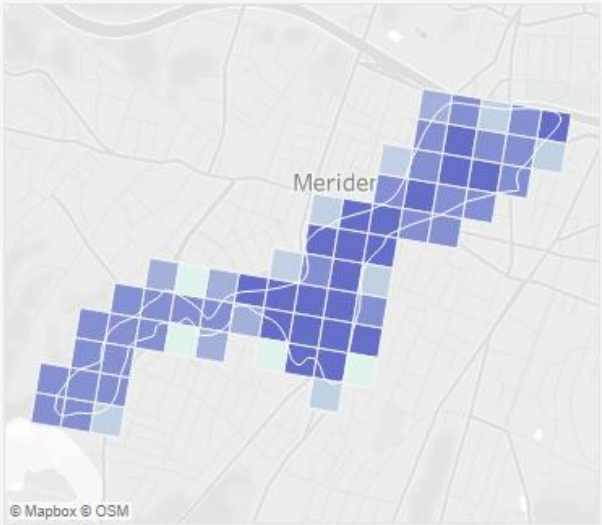
Potential Regional Adaptation/Resilience Opportunity Areas



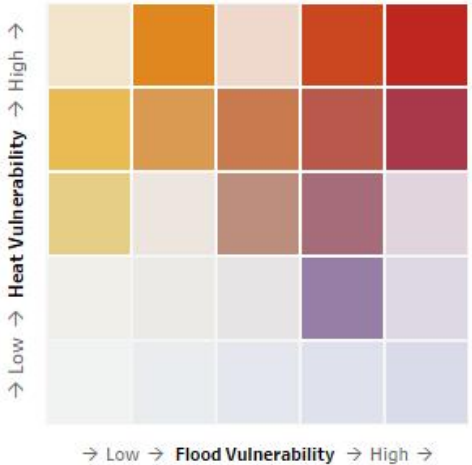
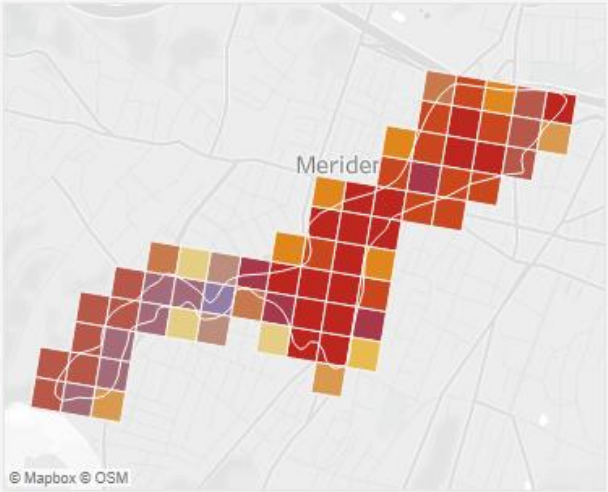
Zone of Shared Risk:
5206-00-249-0
Town: Meriden



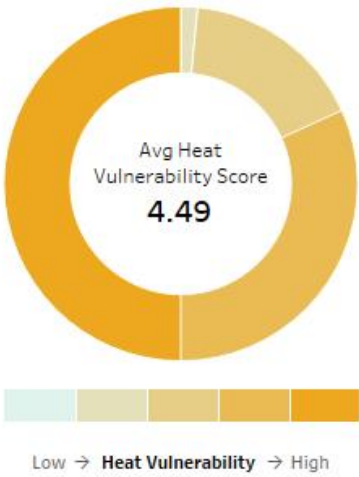
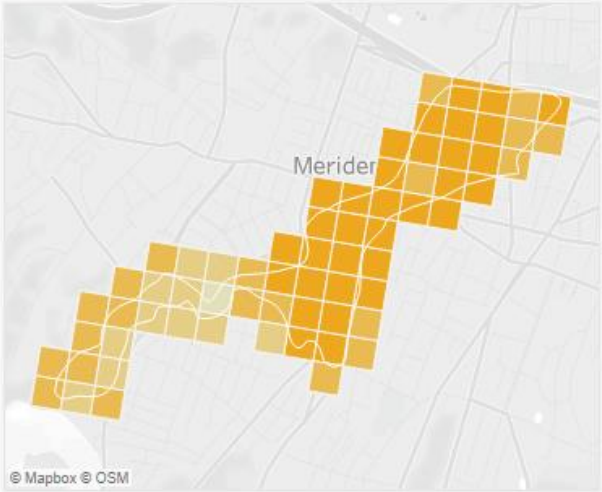
Flood Vulnerability



Combined Vulnerability



Heat Vulnerability



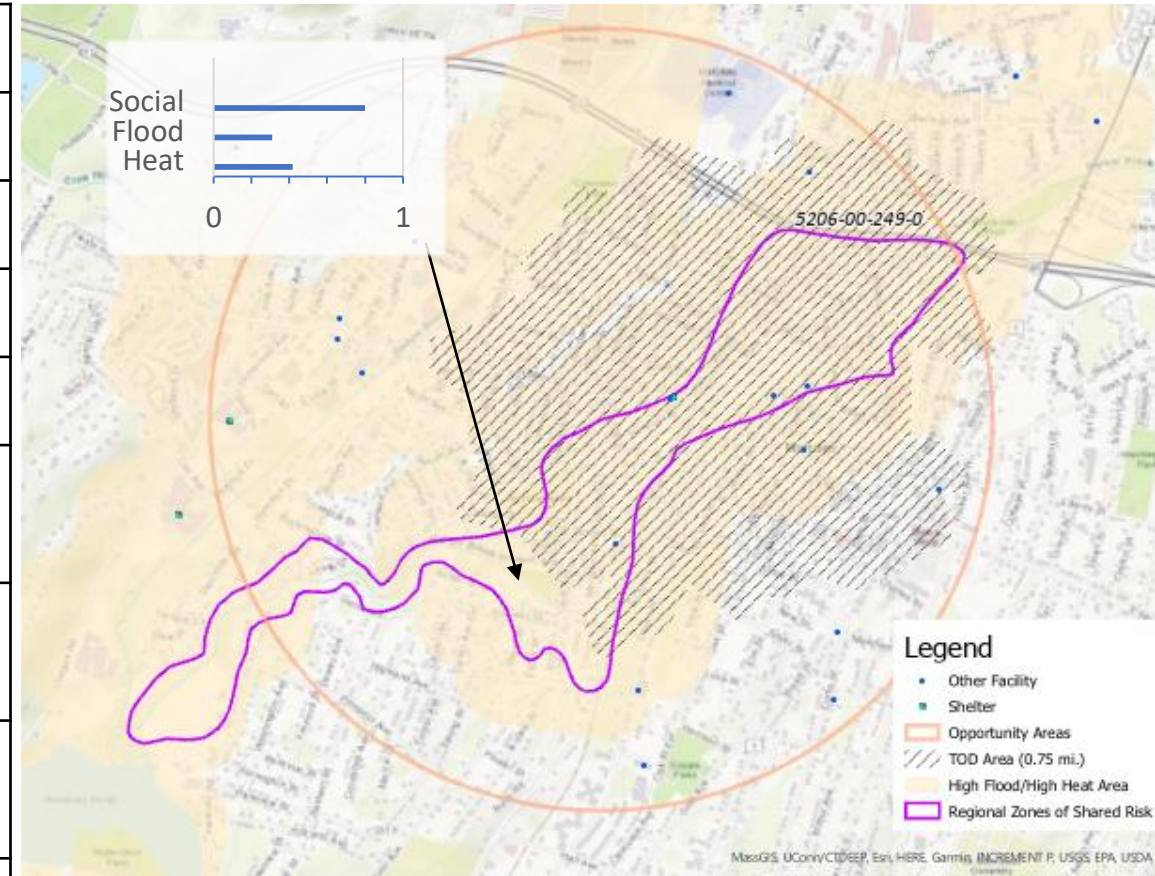
Resilient Connecticut Phase II

Potential Regional Adaptation/Resilience Opportunity Areas



Area #1
 Name: Meriden
 Location: Meriden
 Tier 1

Considerations	Characteristics of Area
Flood Vulnerability	0.31 (moderate-high)
Heat Vulnerability	0.42 (moderate-high)
Social Vulnerability	0.80 (moderate-high)
Zone of Shared Risk	Harbor Brook: 5206-00
Regional Infrastructure Present	Electric substation, law enforcement, CTRail/Amtrak
Area of Planned Development Present	West Main St. and East Main St. commercial zone
Federal Opportunity Zone Present	143 West Main Street development project
Transit-Oriented Development Area	Meriden Station



Resilient Connecticut Phase II

Potential Regional Adaptation/Resilience Opportunity Areas



Area #1
 Name: Meriden
 Location: Meriden
 Tier 1



Example: Meriden Green – Flood Mitigation Project near Meriden TOD



Resilient Connecticut Phase II

Potential Regional Adaptation/Resilience Opportunity Areas



Break Out



Resilient Connecticut Phase II

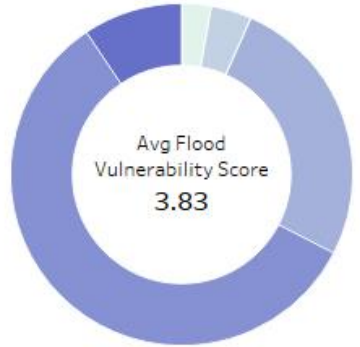
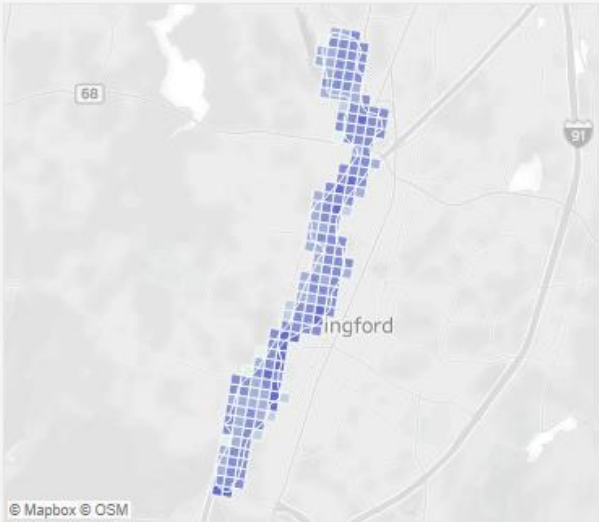
Potential Regional Adaptation/Resilience Opportunity Areas



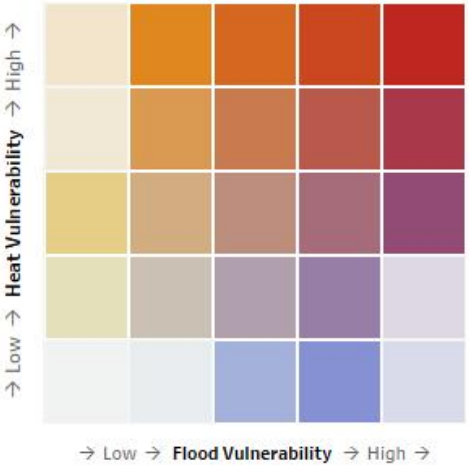
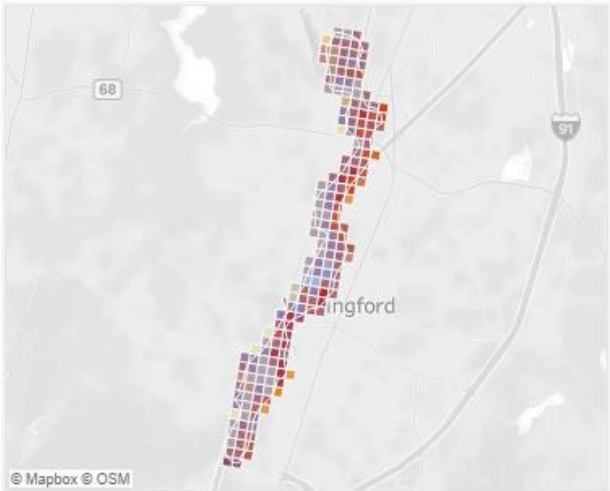
Zone of Shared Risk:
5200-00-258-0
Town: Wallingford



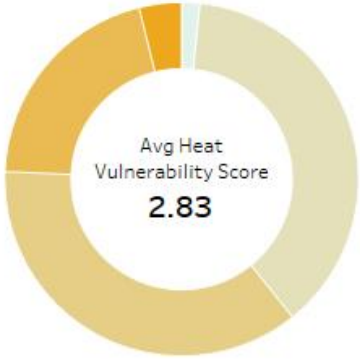
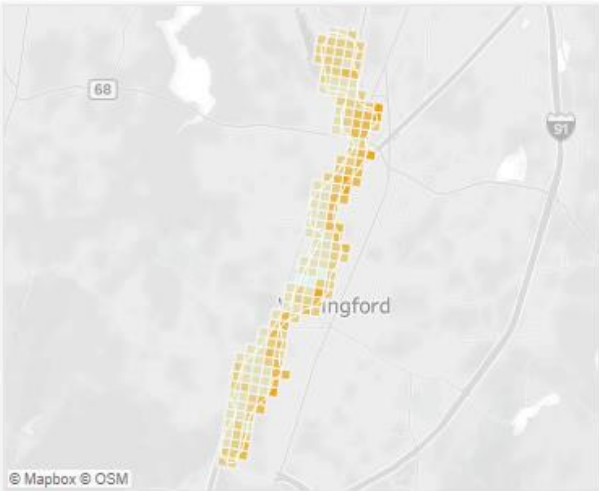
Flood Vulnerability



Combined Vulnerability



Heat Vulnerability



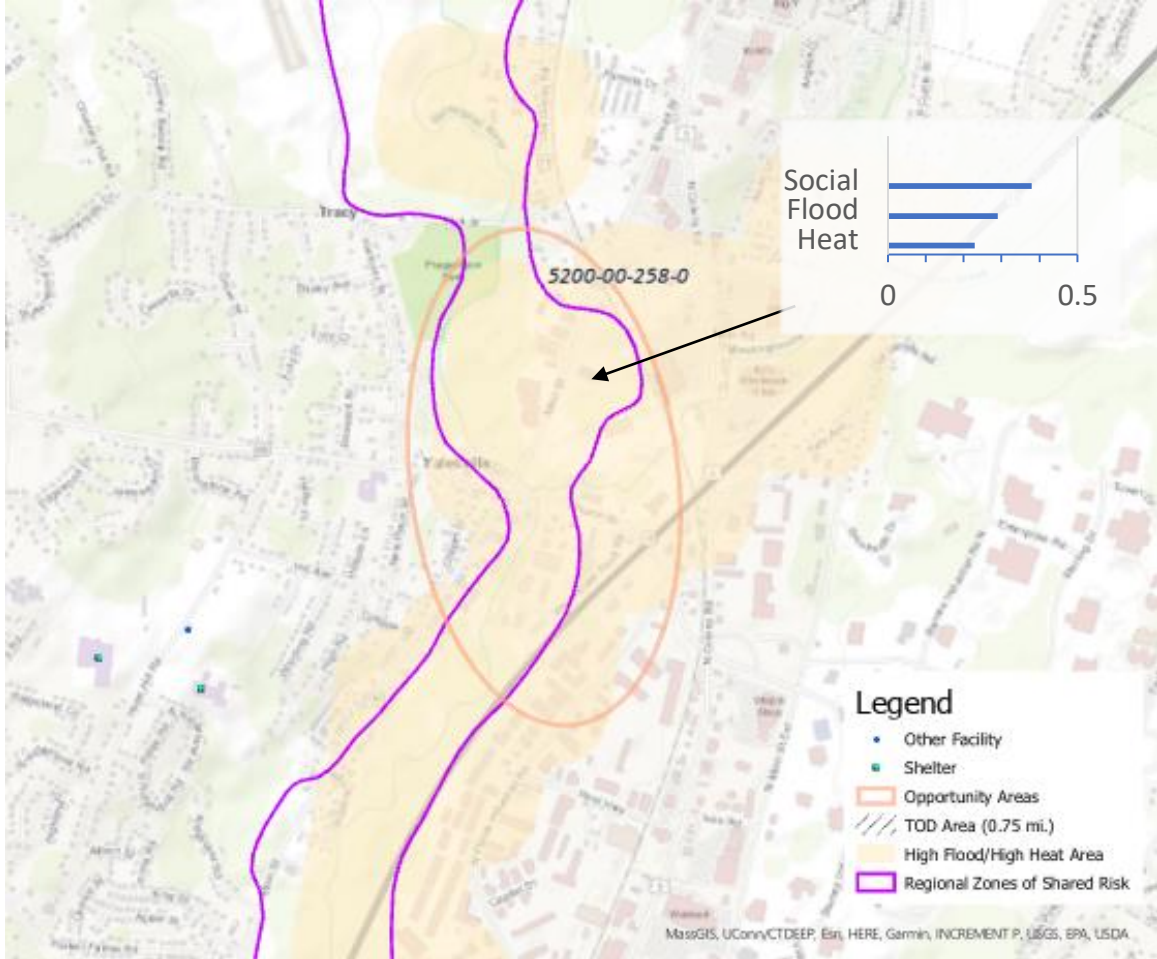
Resilient Connecticut Phase II

Potential Regional Adaptation/Resilience Opportunity Areas



Area #2
 Name: Yalesville
 Location: Wallingford
 Tier 2

Considerations	Characteristics of Area
Flood Vulnerability	0.29 (moderate-high)
Heat Vulnerability	0.23 (moderate)
Social Vulnerability	0.38 (moderate-low)
Zone of Shared Risk	Quinnipiac River: 5200-00
Regional Infrastructure Present	Wastewater treatment plant, CTRail, Amtrak
Area of Planned Development Present	Yalesville future land use
Federal Opportunity Zone Present	N/A
Transit-Oriented Development Area	N/A



Resilient Connecticut Phase II

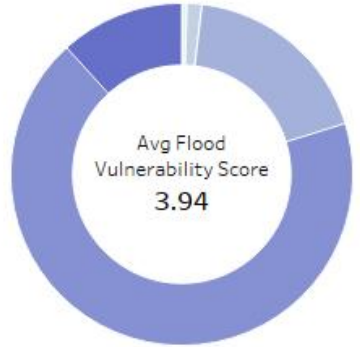
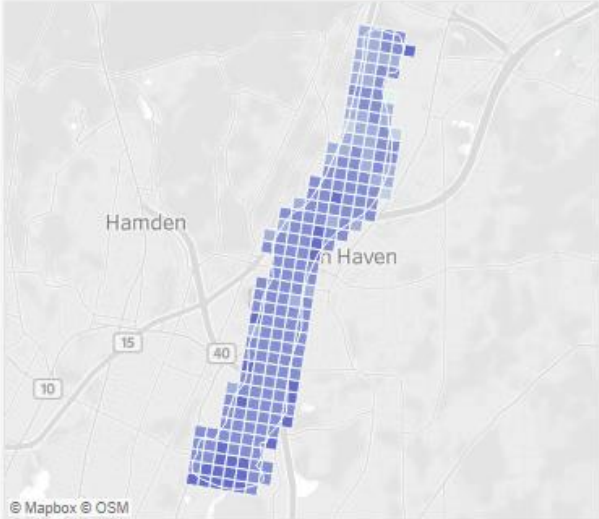
Potential Regional Adaptation/Resilience Opportunity Areas



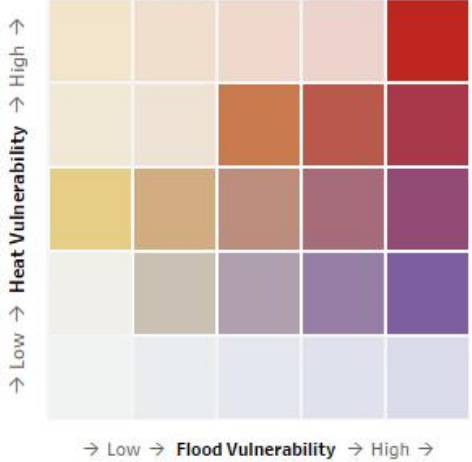
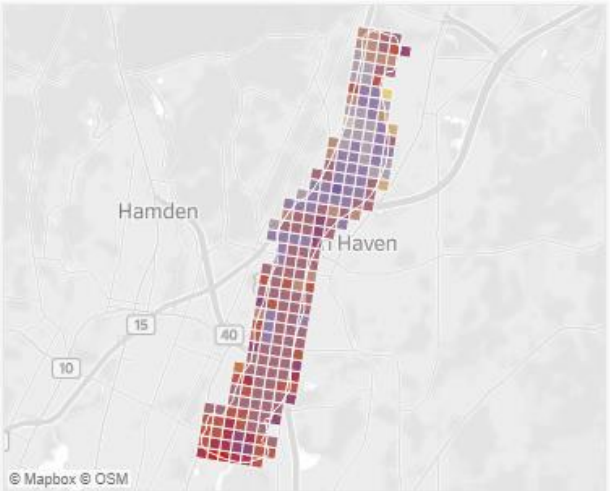
Zone of Shared Risk:
5200-00-261-0
Town: North Haven



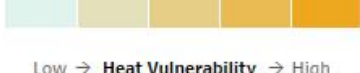
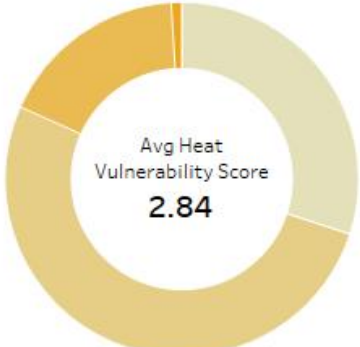
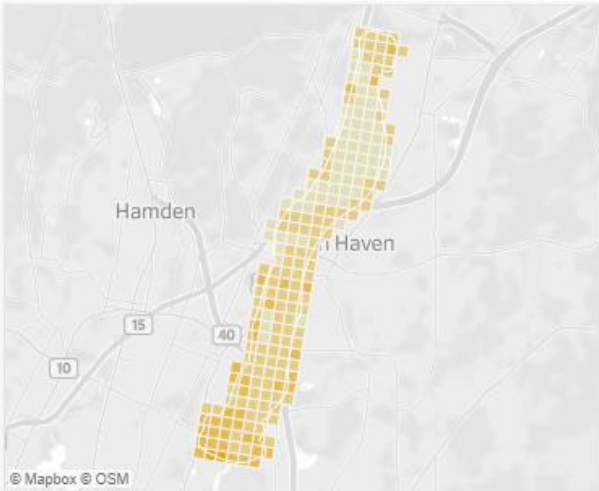
Flood Vulnerability



Combined Vulnerability



Heat Vulnerability



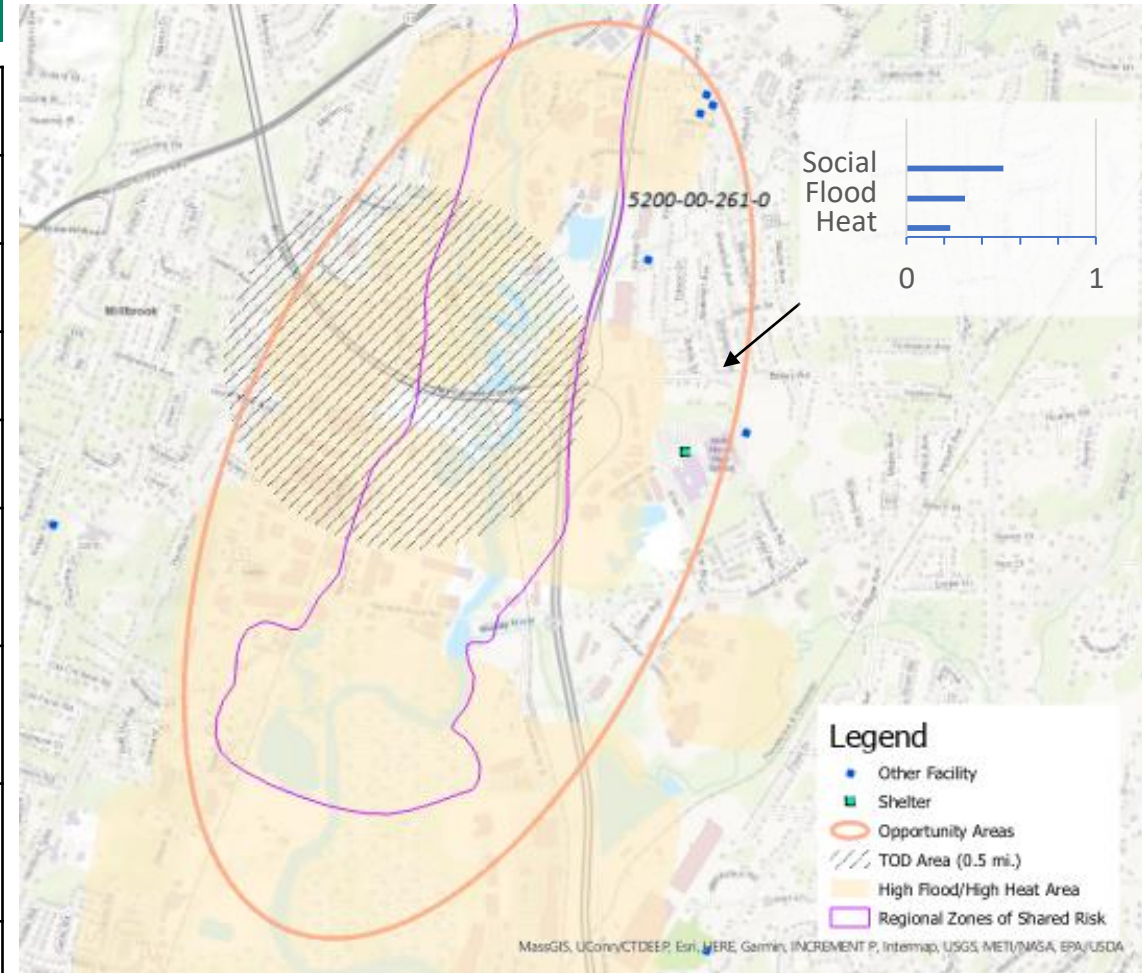
Resilient Connecticut Phase II

Potential Regional Adaptation/Resilience Opportunity Areas



Area #4
 Name: North Haven
 Location: North Haven
 Tier 2

Considerations	Characteristics of Area
Flood Vulnerability	0.31 (moderate-high)
Heat Vulnerability	0.23 (moderate)
Social Vulnerability	0.51 (moderate)
Zone of Shared Risk	Quinnipiac River: 5200-00
Regional Infrastructure Present	Electric substation, CT Rail/Amtrak, electric transmission
Area of Planned Development Present	Expand Center Block, redevelopment of Upjohn site, expand R&D use
Federal Opportunity Zones Present	N/A
Transit-Oriented Development Area	Potential North Haven Station



Resilient Connecticut Phase II

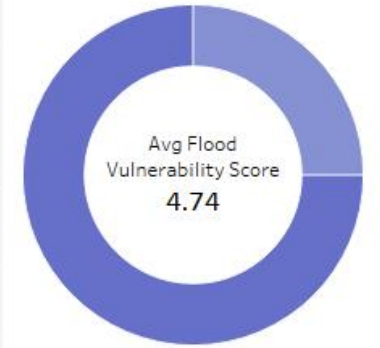
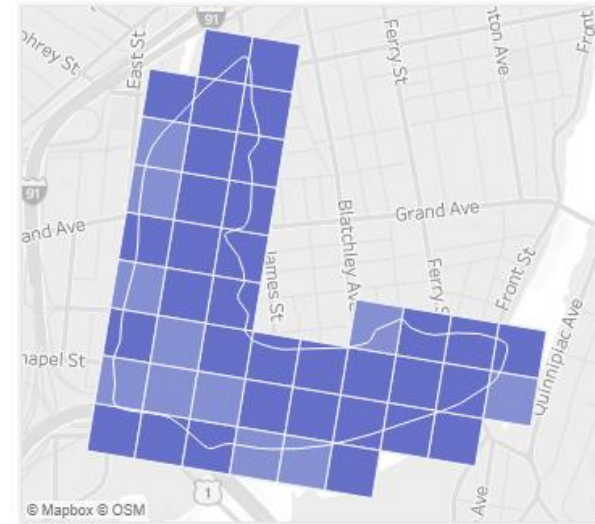
Potential Regional Adaptation/Resilience Opportunity Areas



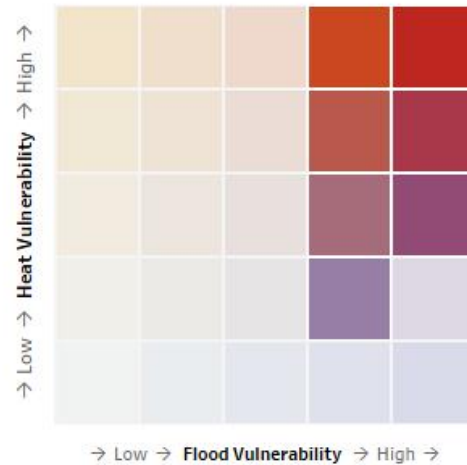
Zone of Shared Risk:
5302-00-271-0
Town: **New Haven**



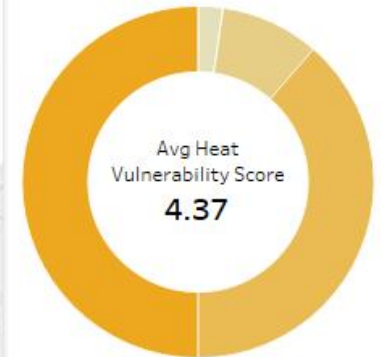
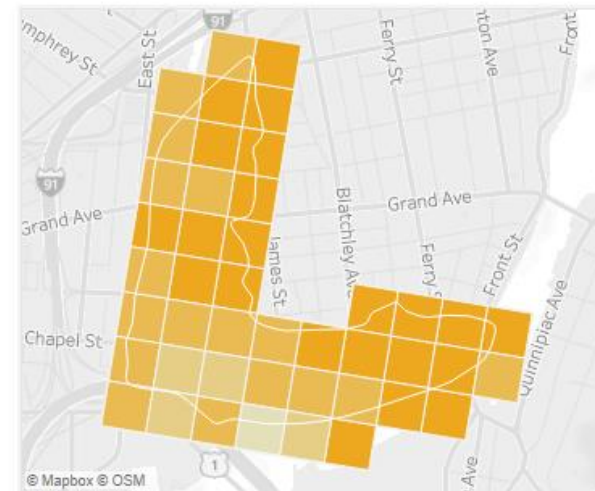
Flood Vulnerability



Combined Vulnerability



Heat Vulnerability



Resilient Connecticut Phase II

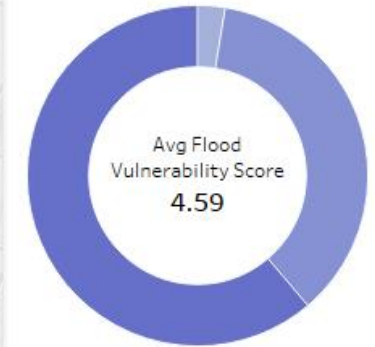
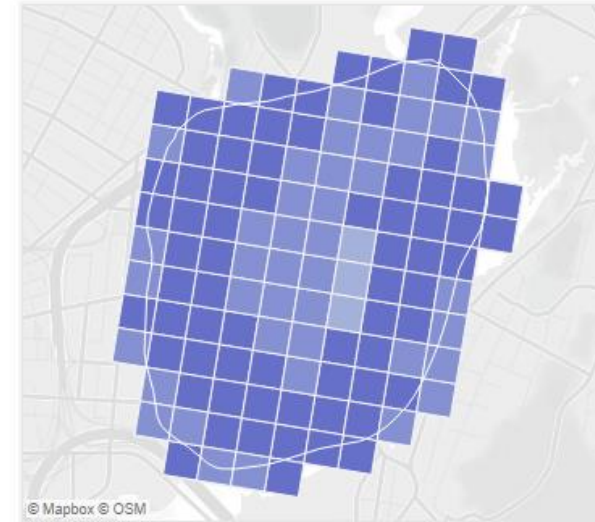
Potential Regional Adaptation/Resilience Opportunity Areas



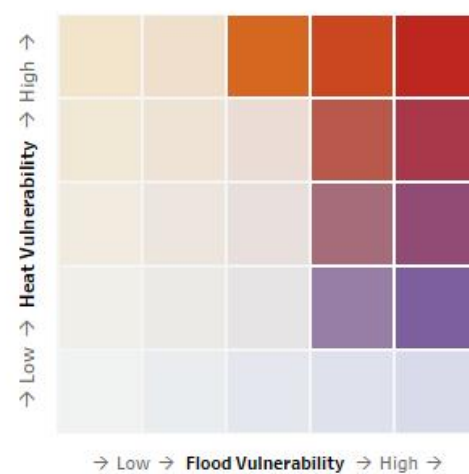
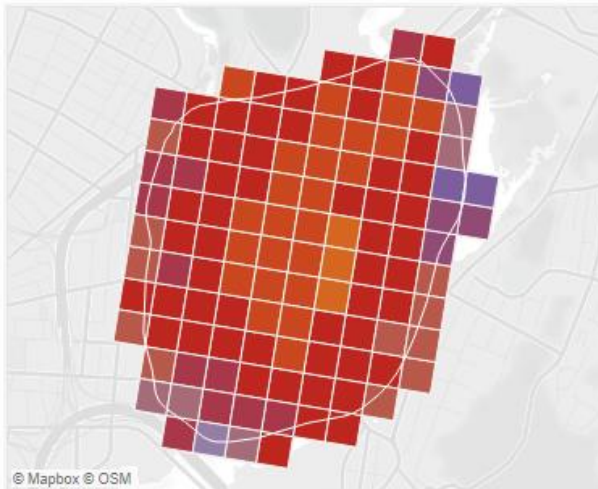
Zone of Shared Risk:
5200-00-392-89
Town: **New Haven**



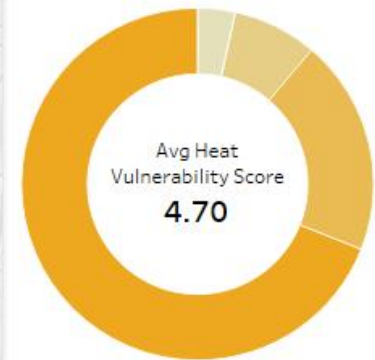
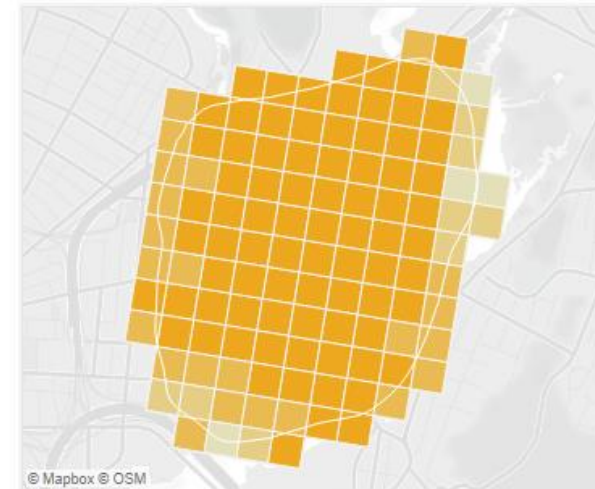
Flood Vulnerability



Combined Vulnerability



Heat Vulnerability



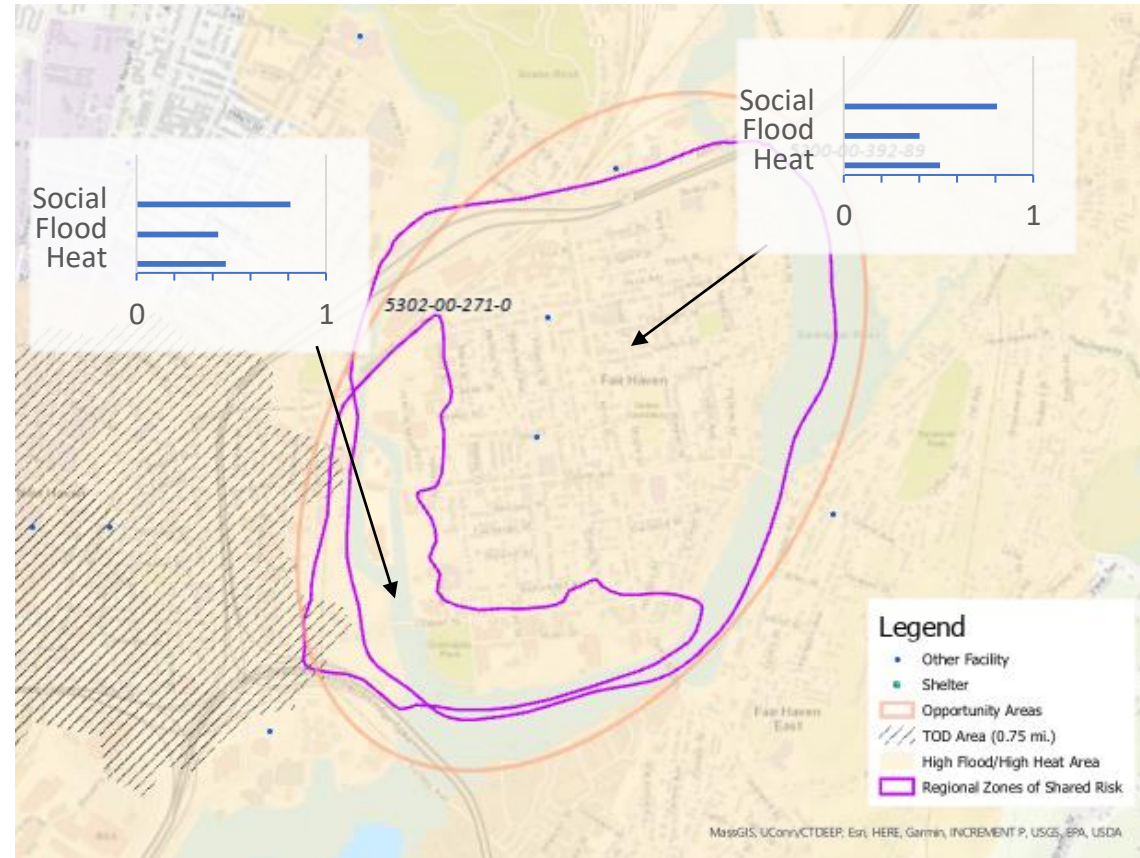
Resilient Connecticut Phase II

Potential Regional Adaptation/Resilience Opportunity Areas



Area #5
 Name: Fair Haven
 Location: New Haven
 Tier 2

Considerations	Characteristics of Area
Flood Vulnerability	0.40 to 0.43 (high)
Heat Vulnerability	0.47 to 0.51 (high)
Social Vulnerability	0.81 (high)
Zone of Shared Risk	Mill River: 5302-00 Quinnipiac River: 5200-00
Regional Infrastructure Present	Metro-North/CTRail/Amtrak, electric substations
Area of Planned Development Present	N/A
Federal Opportunity Zone Present	Regan Scrap Metal, Phoenix Press, U-Haul
Transit-Oriented Development Area	Nearby (State Street Station)



Resilient Connecticut Phase II

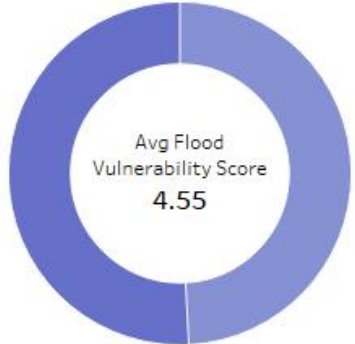
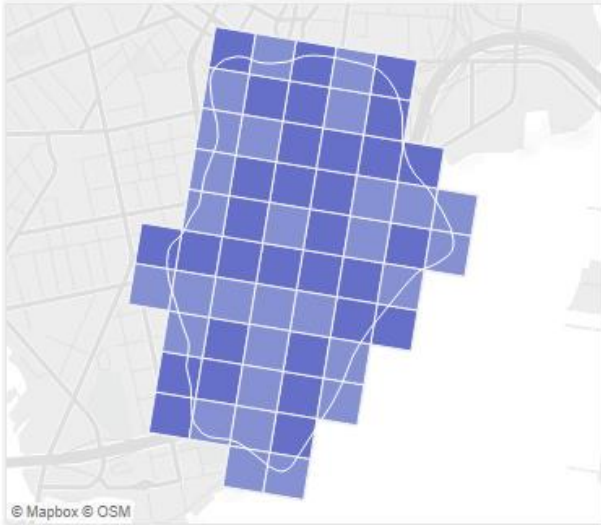
Potential Regional Adaptation/Resilience Opportunity Areas



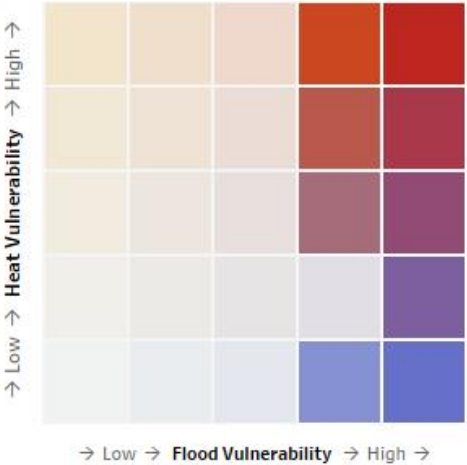
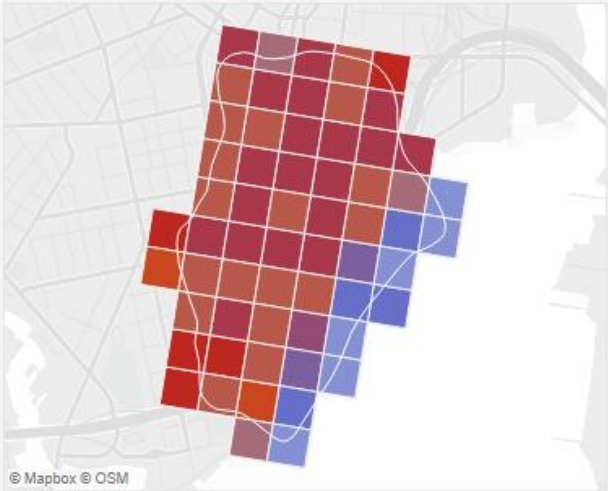
Zone of Shared Risk:
5000-48-273-0
Town: New Haven



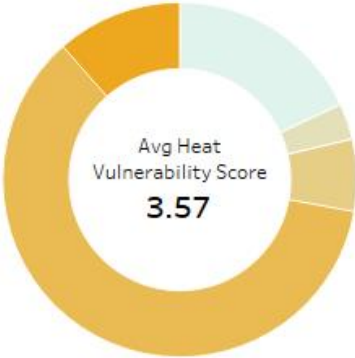
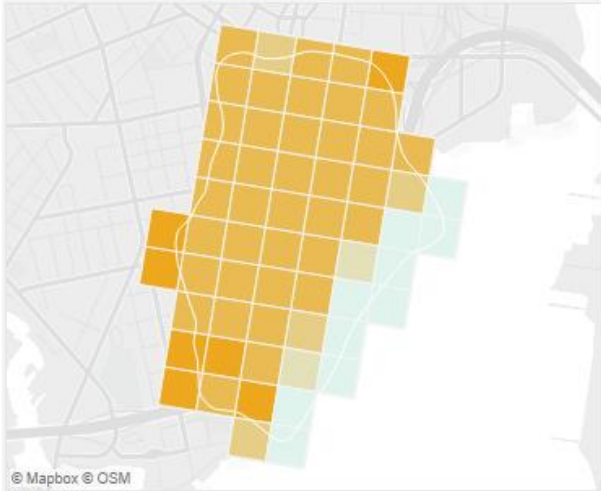
Flood Vulnerability



Combined Vulnerability



Heat Vulnerability



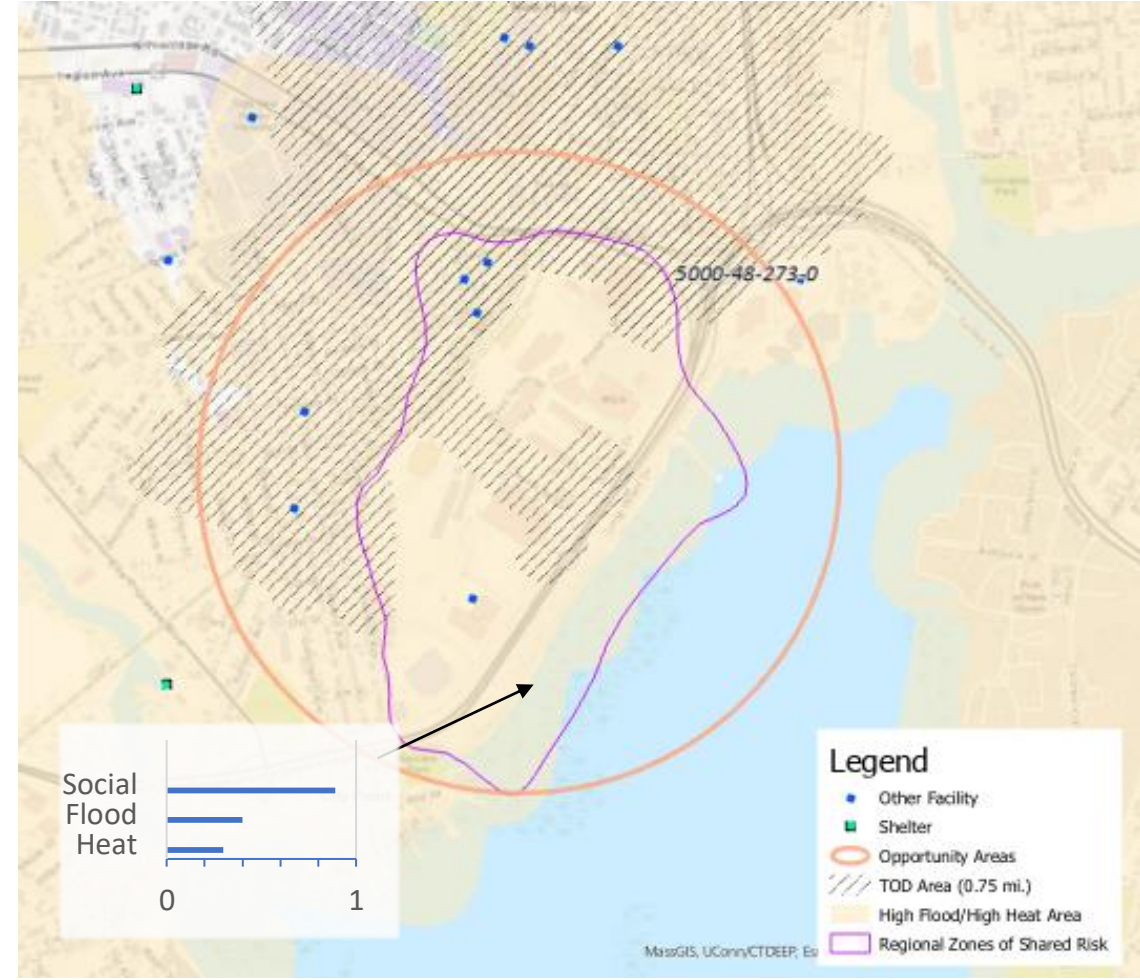
Resilient Connecticut Phase II

Potential Regional Adaptation/Resilience Opportunity Areas



Area #6
 Name: Long Wharf
 Location: New Haven
 Tier 1

Considerations	Characteristics of Area
Flood Vulnerability	0.40 (high)
Heat Vulnerability	0.30 (moderate-high)
Social Vulnerability	0.89 (high)
Zone of Shared Risk	Shoreline: 5000
Regional Infrastructure Present	RWA headquarters, law enforcement, regional commerce, museum
Area of Planned Development Present	Long Wharf
Federal Opportunity Zone Present	Church Street South, Food Terminal
Transit-Oriented Development Area	Union Station



Potential Federal Involvement in Flood Protection

Resilient Connecticut Phase II

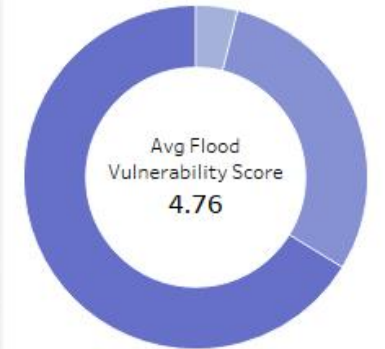
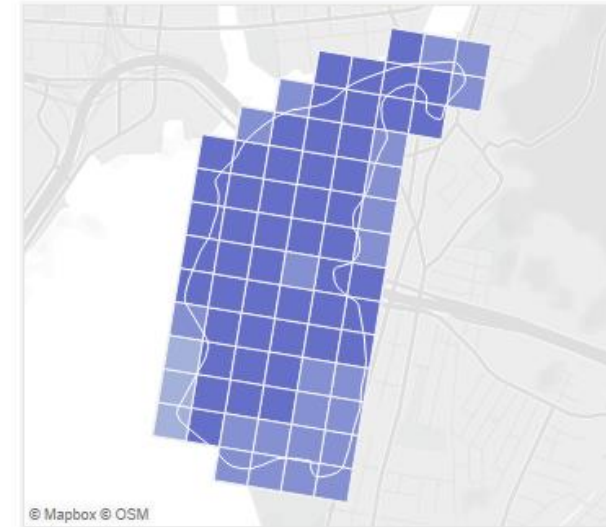
Potential Regional Adaptation/Resilience Opportunity Areas



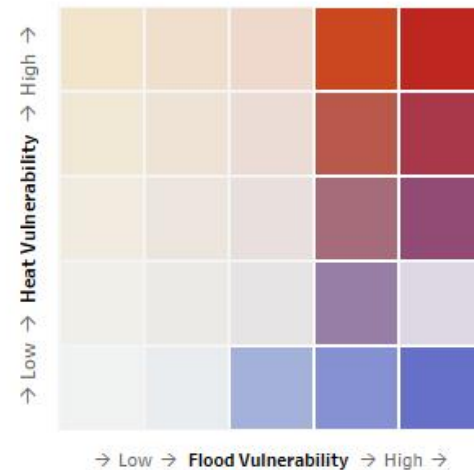
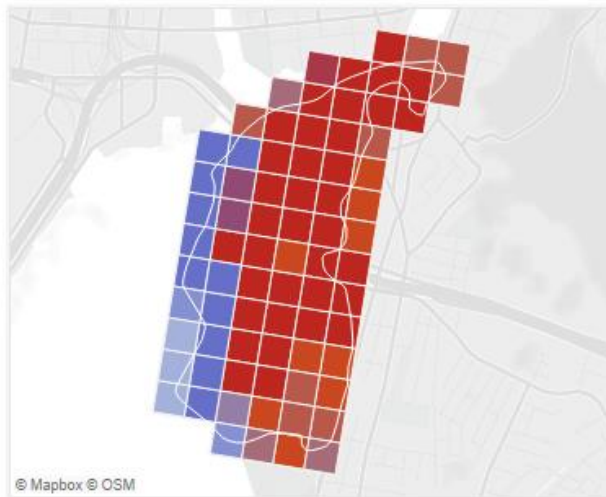
Zone of Shared Risk:
5000-47-274-0
Town: New Haven



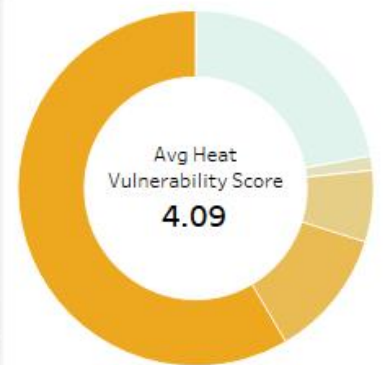
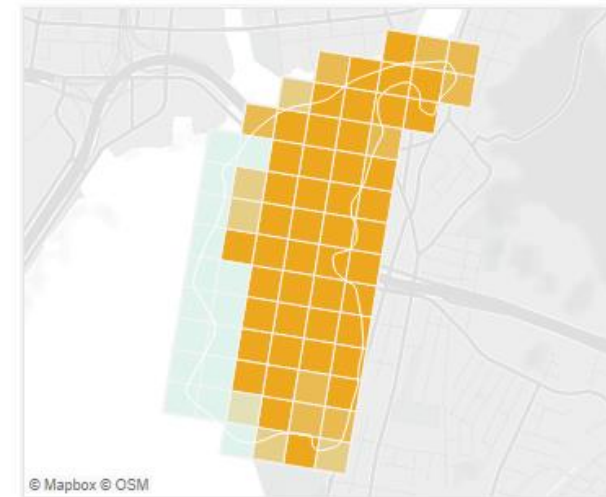
Flood Vulnerability



Combined Vulnerability



Heat Vulnerability



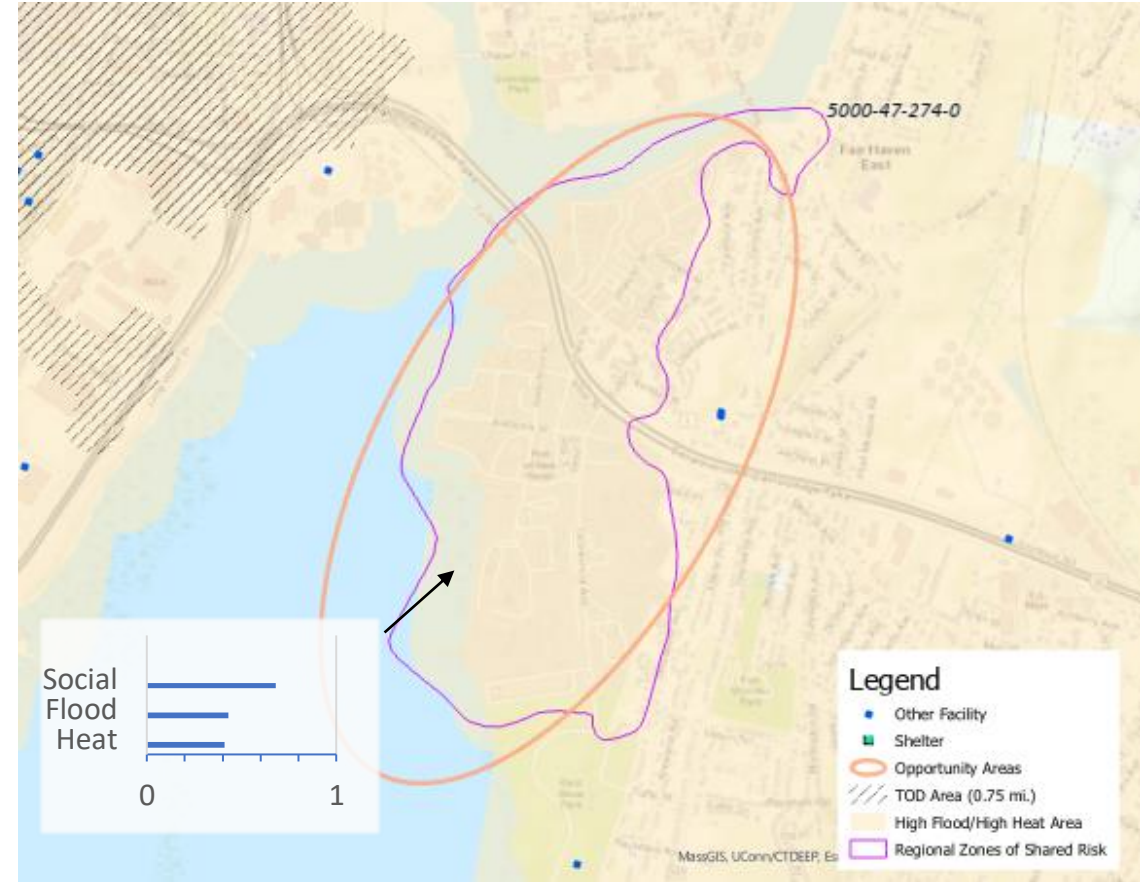
Resilient Connecticut Phase II

Potential Regional Adaptation/Resilience Opportunity Areas



Area #7
 Name: Port Area
 Location: New Haven
 Tier 2

Considerations	Characteristics of Area
Flood Vulnerability	0.43 (high)
Heat Vulnerability	0.41 (moderate-high)
Social Vulnerability	0.68 (moderate-high)
Zone of Shared Risk	Shoreline: 5000-47
Regional Infrastructure Present	The port, power plant, electric substation, biodiesel plant
Area of Planned Development Present	Canal/Belle Dock south of Forbes Ave
Federal Opportunity Zone Present	N/A
Transit-Oriented Development Area	N/A



Resilient Connecticut Phase II

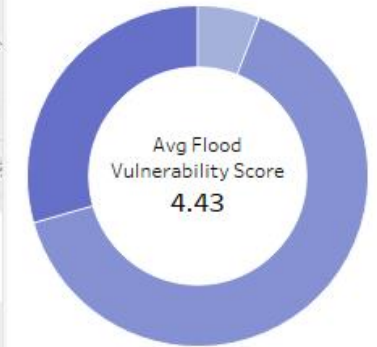
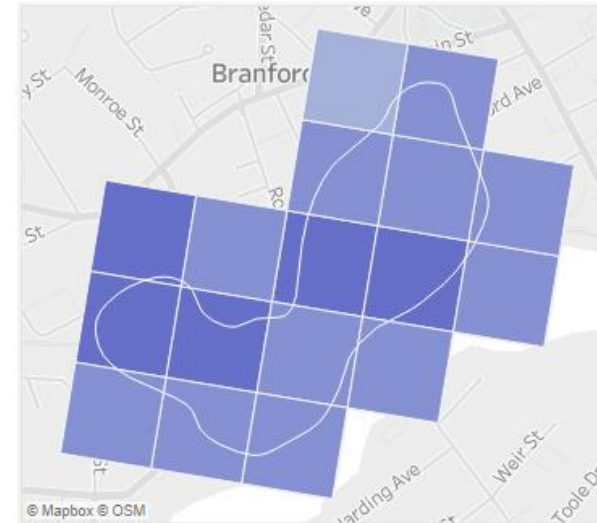
Potential Regional Adaptation/Resilience Opportunity Areas



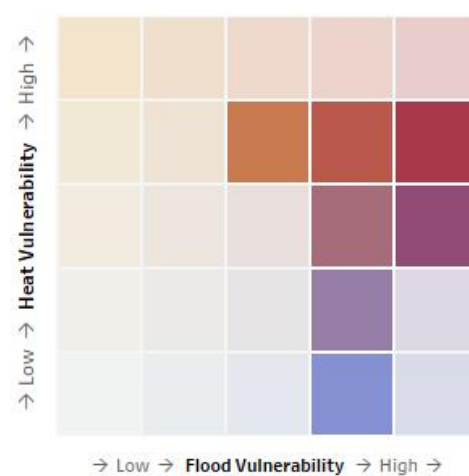
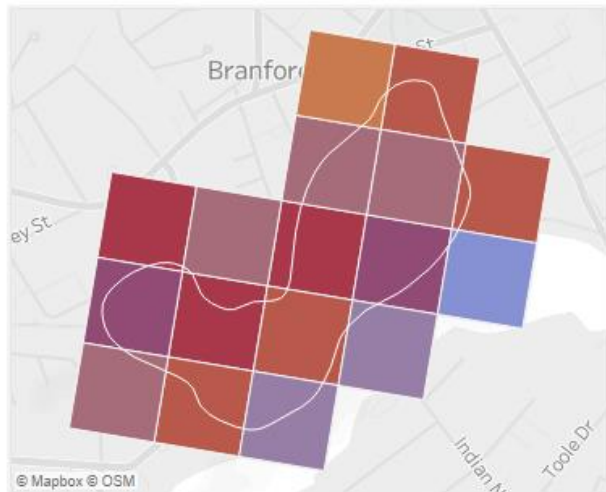
Zone of Shared Risk:
5000-39-303-0
Town: Branford



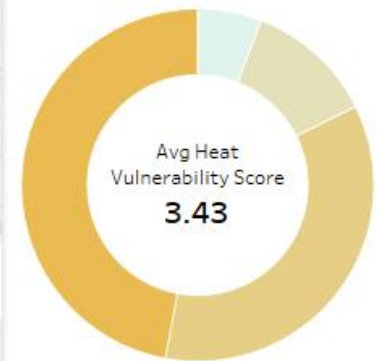
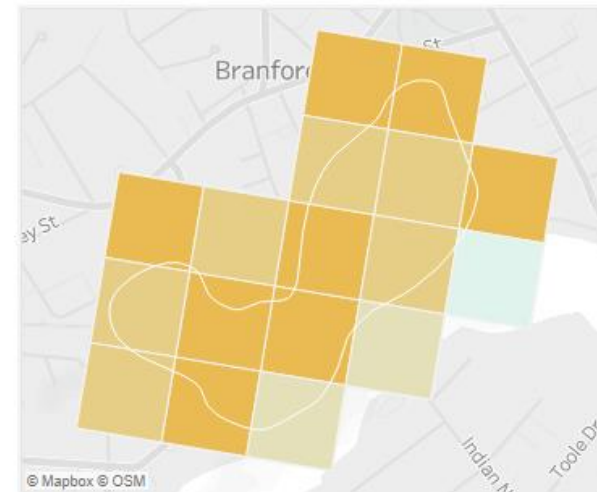
Flood Vulnerability



Combined Vulnerability



Heat Vulnerability



Resilient Connecticut Phase II

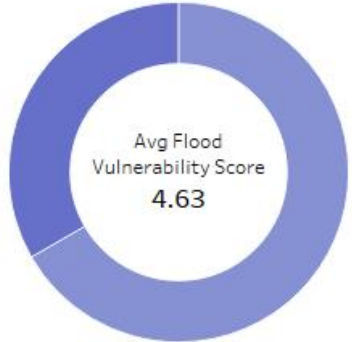
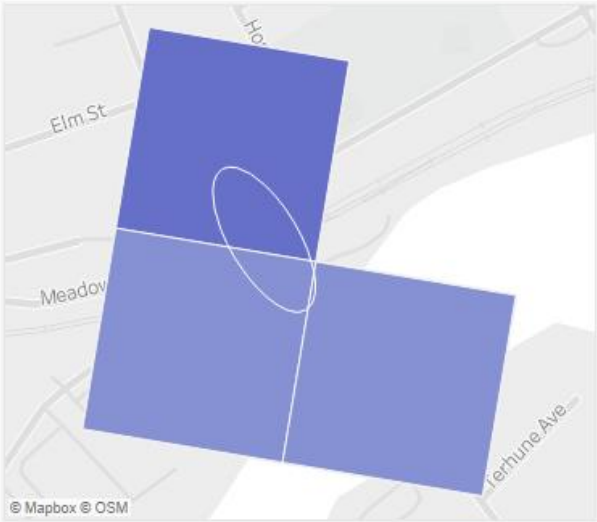
Potential Regional Adaptation/Resilience Opportunity Areas



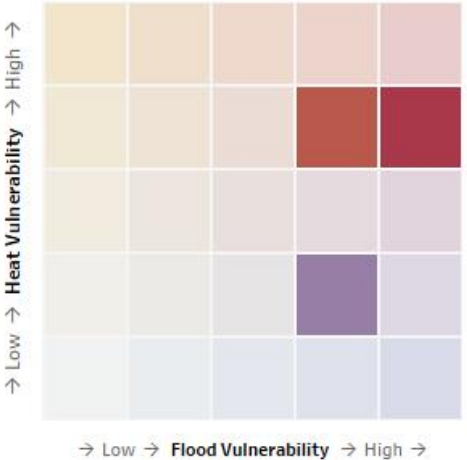
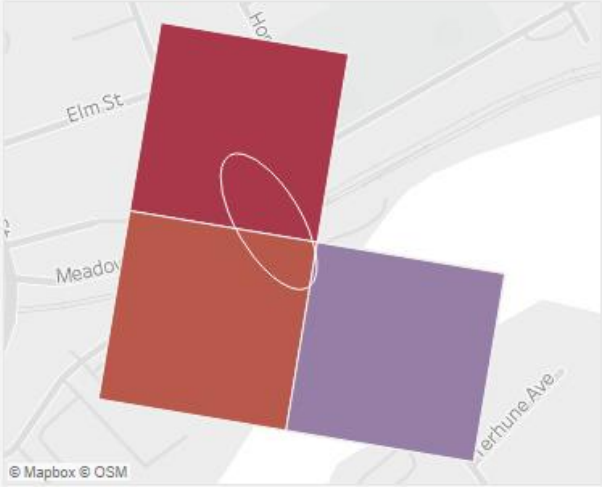
Zone of Shared Risk:
5000-39-523
Town: Branford



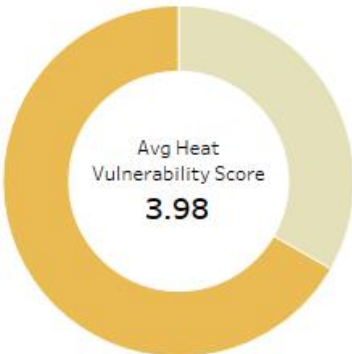
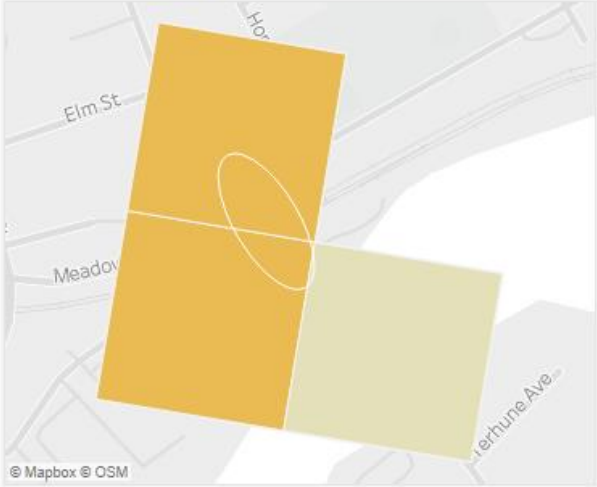
Flood Vulnerability



Combined Vulnerability



Heat Vulnerability



Resilient Connecticut Phase II

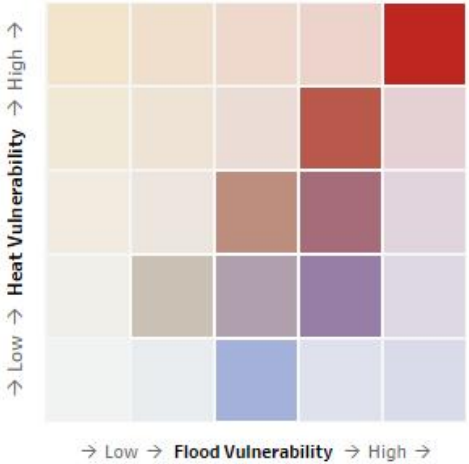
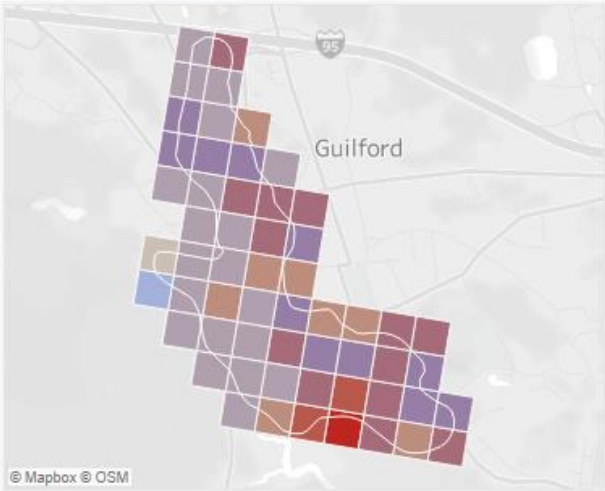
Potential Regional Adaptation/Resilience Opportunity Areas



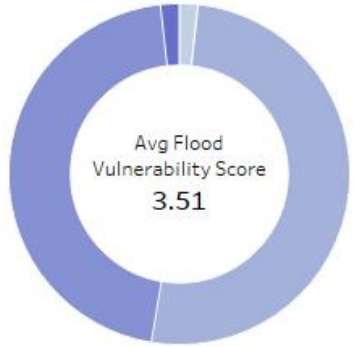
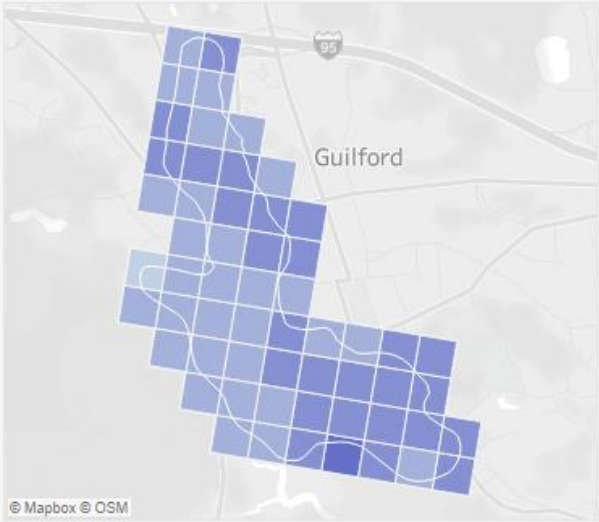
Zone of Shared Risk:
5110-00-319-0
Town: Guilford



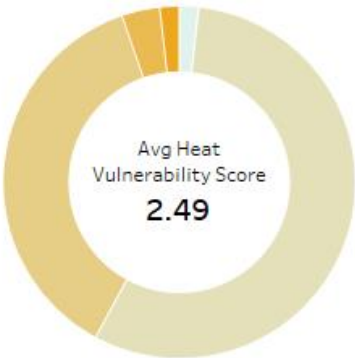
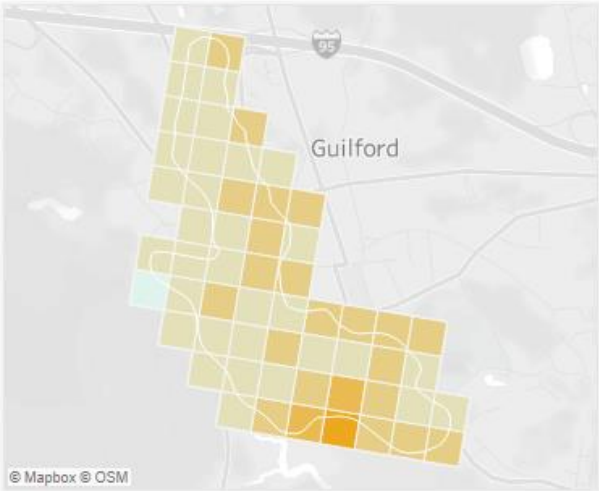
Combined Vulnerability



Flood Vulnerability



Heat Vulnerability



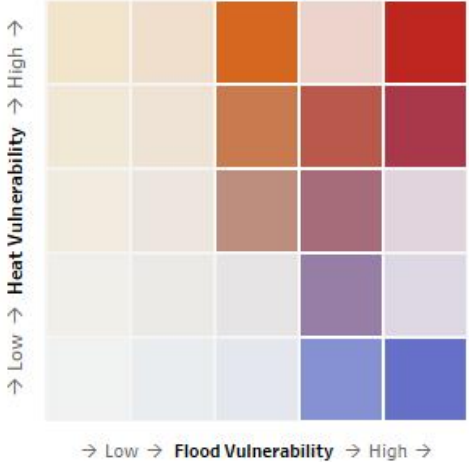
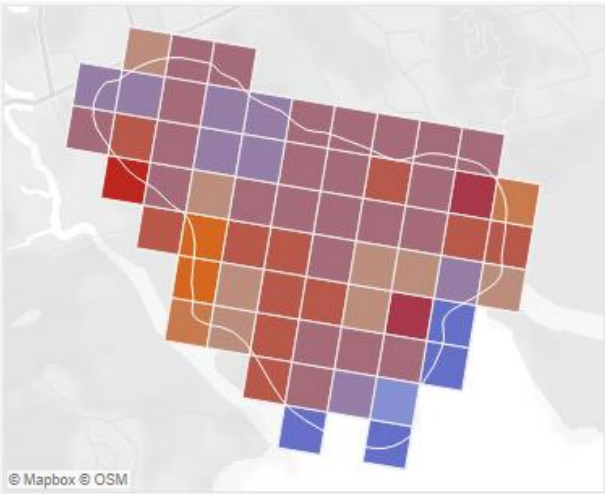
Resilient Connecticut Phase II

Potential Regional Adaptation/Resilience Opportunity Areas

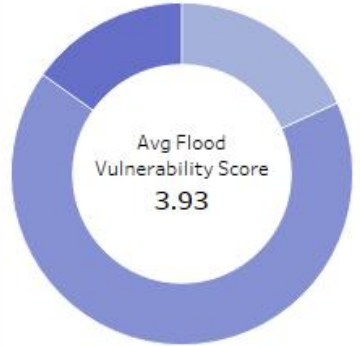
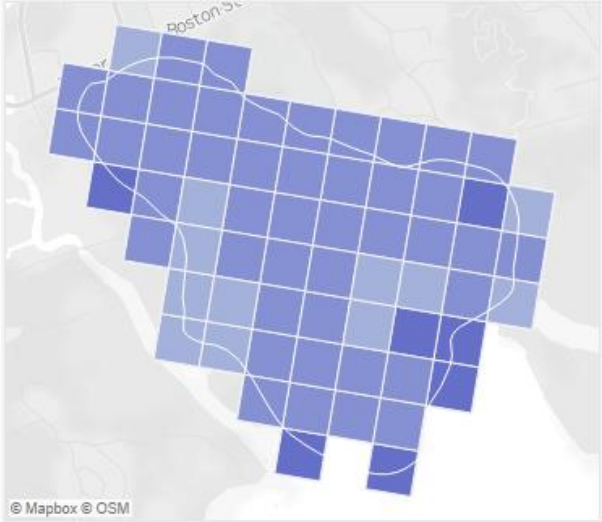
Zone of Shared Risk:
5110-00-315-0
Town: Guilford



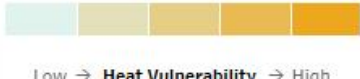
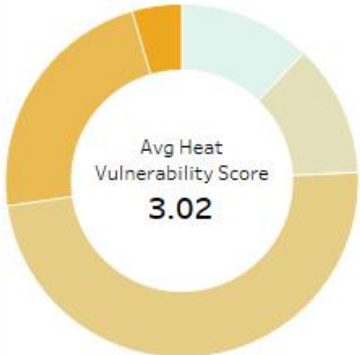
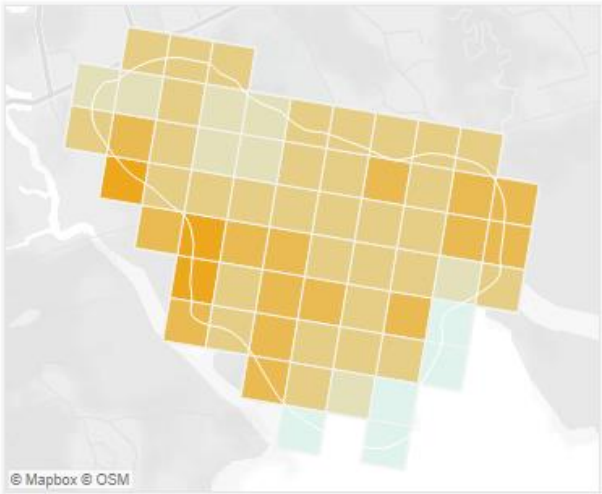
Combined Vulnerability



Flood Vulnerability



Heat Vulnerability



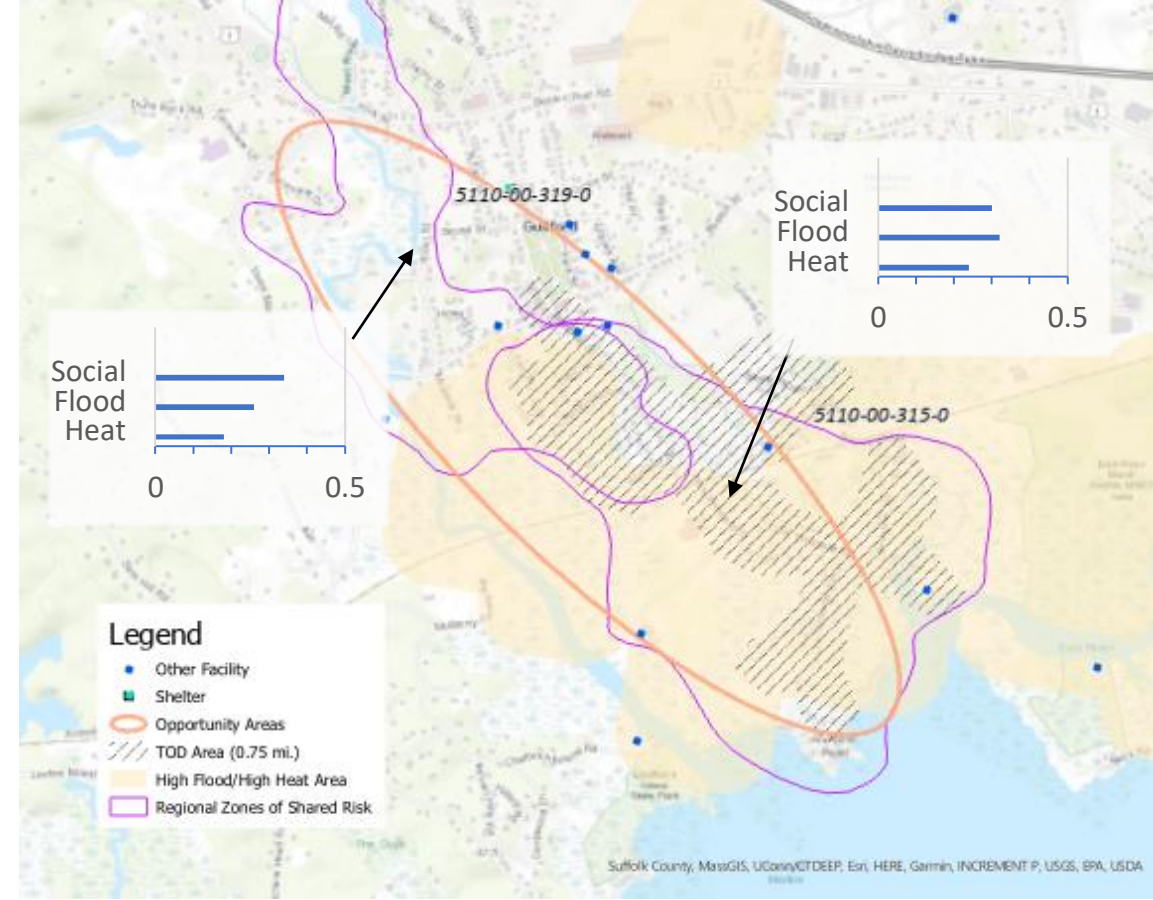
Resilient Connecticut Phase II

Potential Regional Adaptation/Resilience Opportunity Areas



Area #9
 Name: Guilford
 Location: Guilford
 Tier 2

Considerations	Characteristics of Area
Flood Vulnerability	0.26 to 0.32 (moderate-high)
Heat Vulnerability	0.18 to 0.24 (moderate)
Social Vulnerability	0.30 to 0.34 (moderate-low)
Zone of Shared Risk	West River: 5110-00
Regional Infrastructure Present	Amtrak/Shoreline East, museum, electric substation, TOD, public water
Area of Planned Development Present	Commercial development & redevelopment
Federal Opportunity Zone Present	N/A
Transit-Oriented Development Area	Guilford Station



Resilient Connecticut Phase II

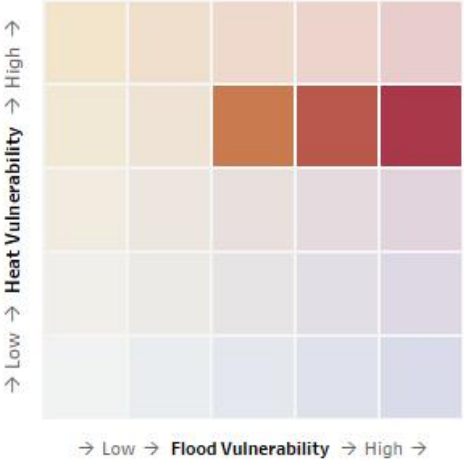
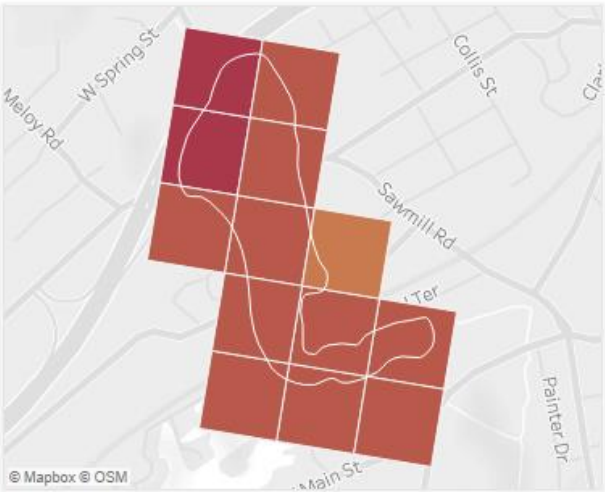
Potential Regional Adaptation/Resilience Opportunity Areas



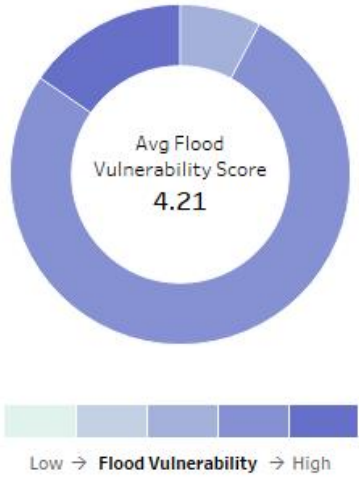
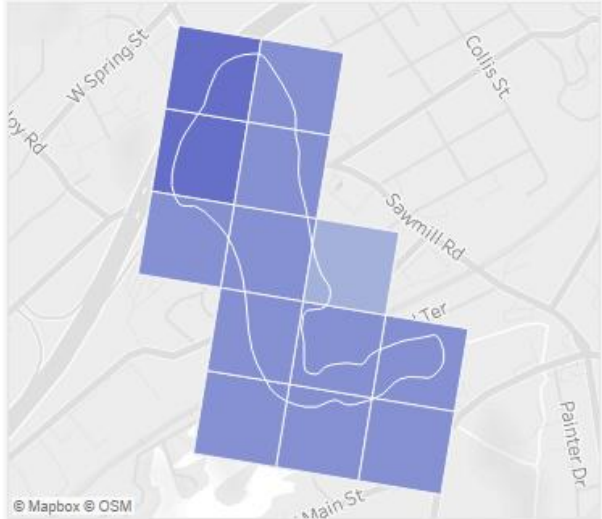
Zone of Shared Risk:
5000-50-345-0
Town: West Haven



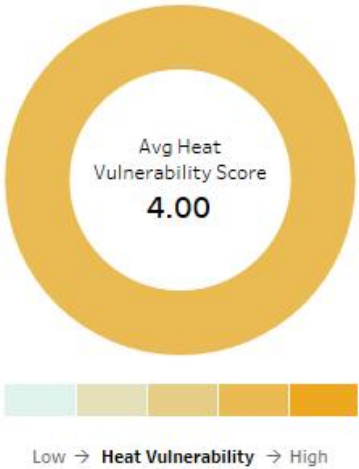
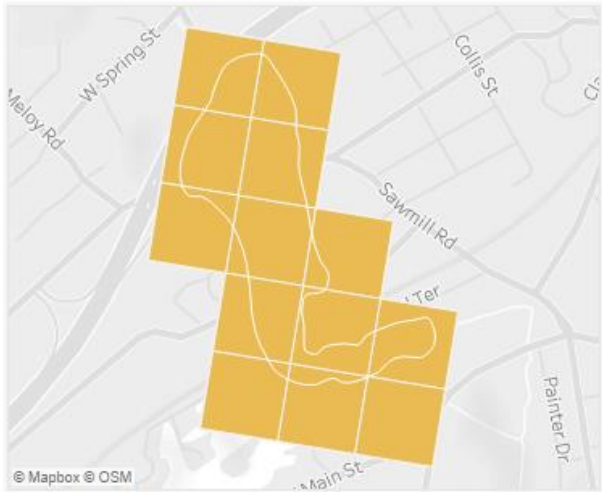
Combined Vulnerability



Flood Vulnerability



Heat Vulnerability



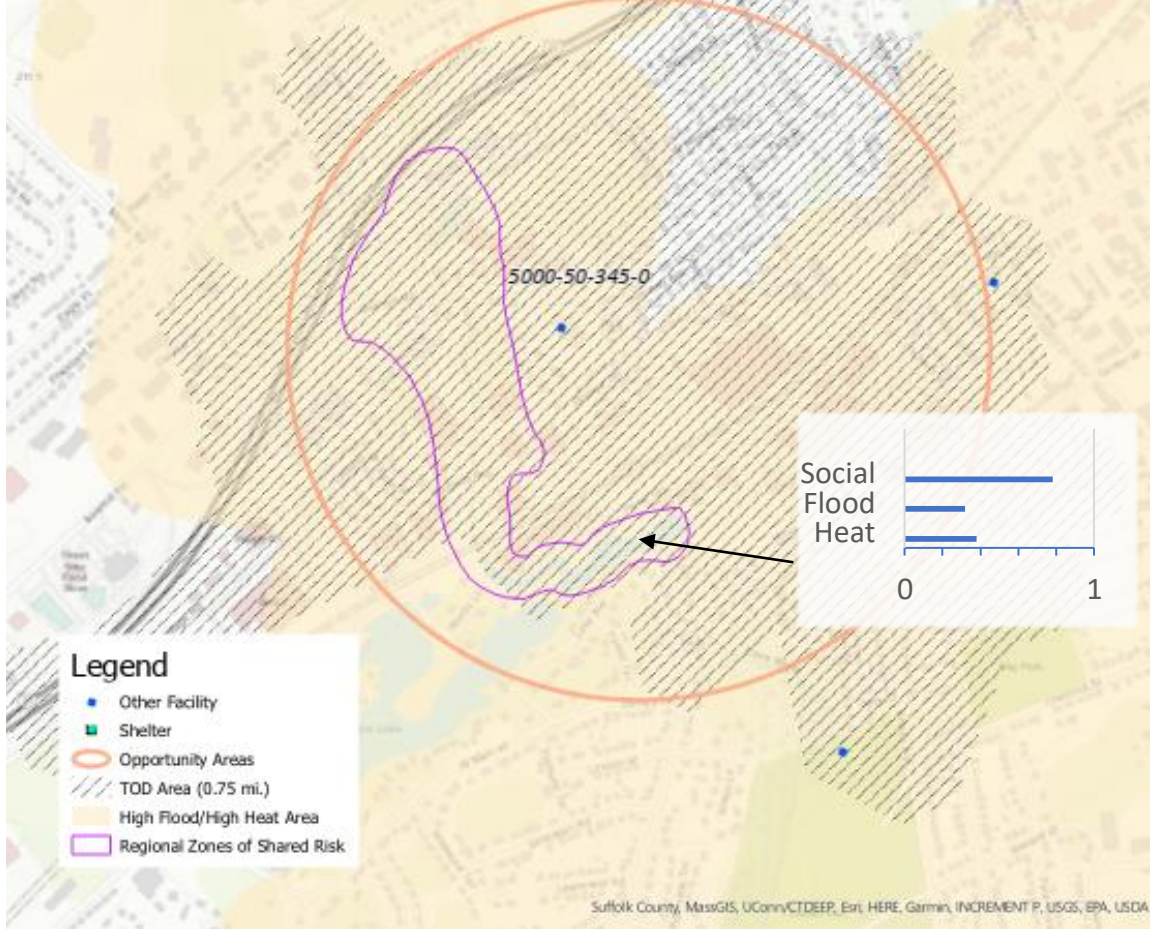
Resilient Connecticut Phase II

Potential Regional Adaptation/Resilience Opportunity Areas



Area #10
 Name: West Haven
 Location: West Haven
 Tier 1

Considerations	Characteristics of Area
Flood Vulnerability	0.32 (moderate-high)
Heat Vulnerability	0.38 (moderate-high)
Social Vulnerability	0.78 (moderate-high)
Zone of Shared Risk	Shoreline: 5000-50
Regional Infrastructure Present	I-95, TOD, public water and sewer, Metro-north/Amtrak
Area of Planned Development Present	N/A
Federal Opportunity Zone Present	N/A
Transit-Oriented Development Area	West Haven Station



Suffolk County, MassGIS, UConn/CTDEEP, Esri, HERE, Garmin, INCREMENT P, USGS, EPA, USDA

Resilient Connecticut Phase II

Potential Regional Adaptation/Resilience Opportunity Areas



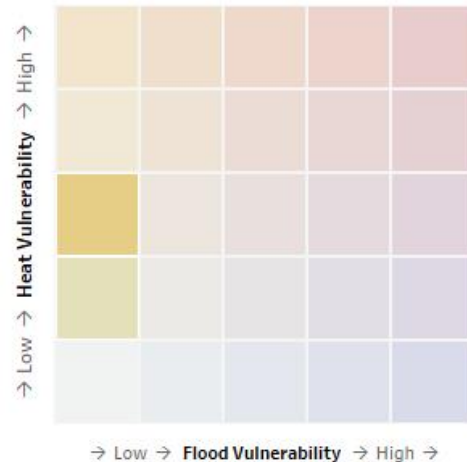
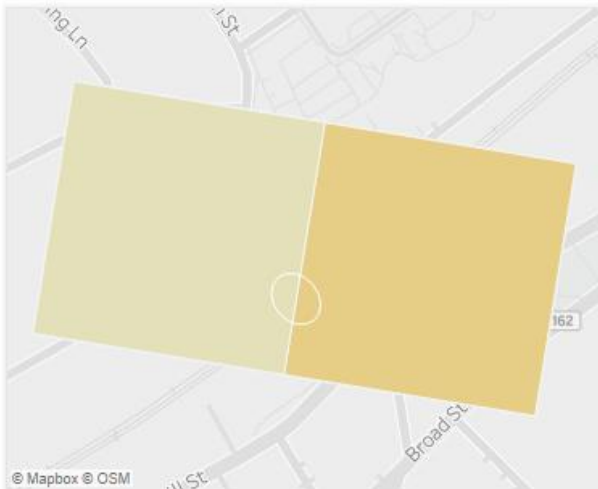
Zone of Shared Risk:
5307-00-488-0
Town: Milford



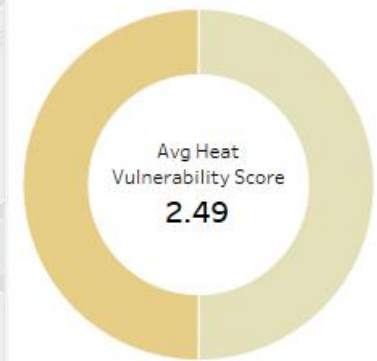
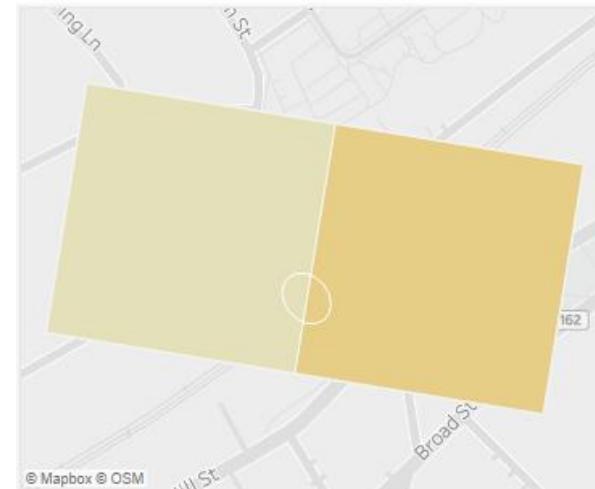
Flood Vulnerability



Combined Vulnerability



Heat Vulnerability



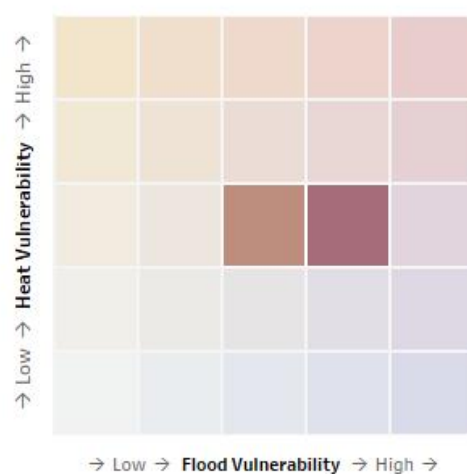
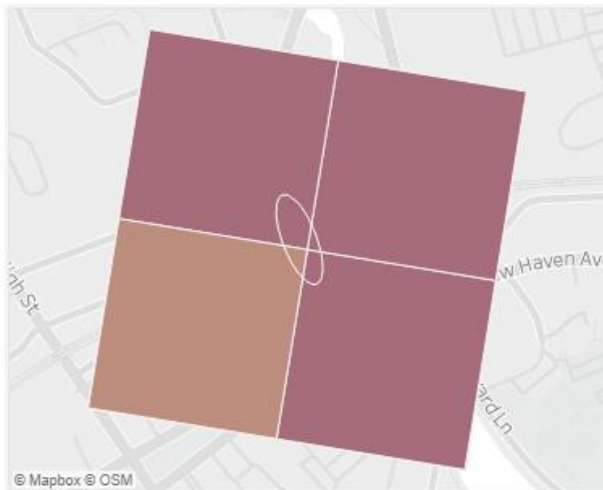
Resilient Connecticut Phase II

Potential Regional Adaptation/Resilience Opportunity Areas

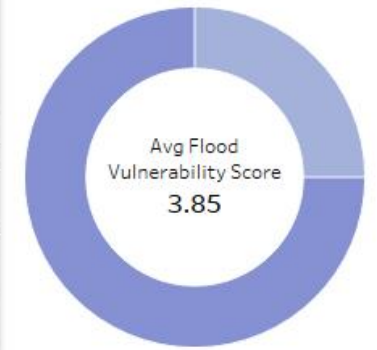
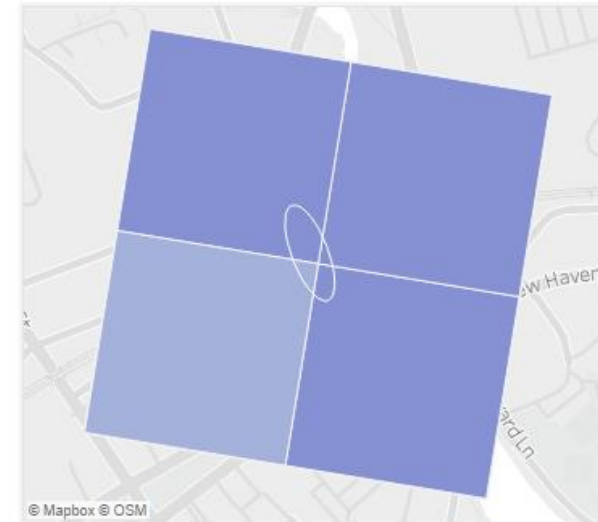
Zone of Shared Risk:
5307-00-489-0
Town: Milford



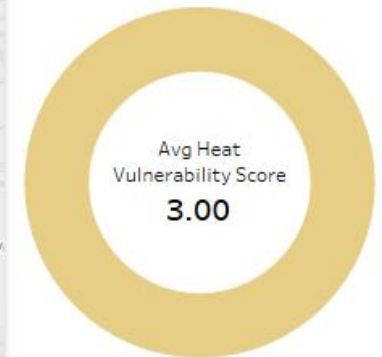
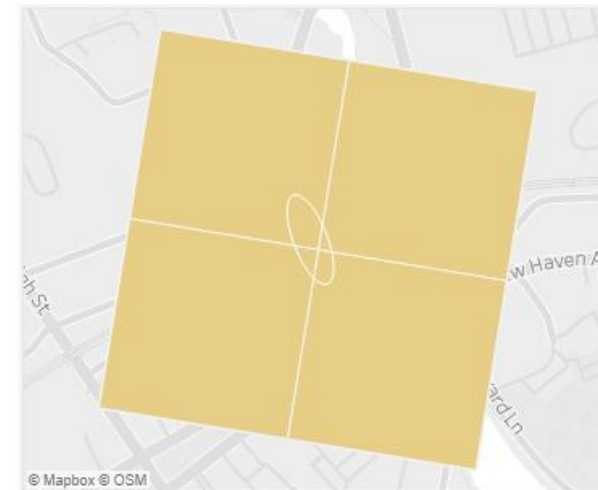
Combined Vulnerability



Flood Vulnerability



Heat Vulnerability



Resilient Connecticut Phase II

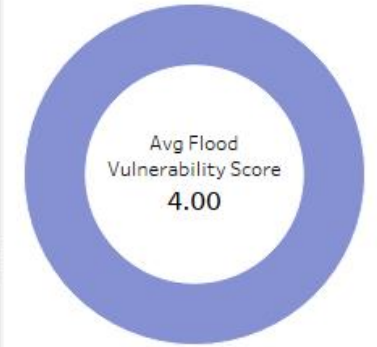
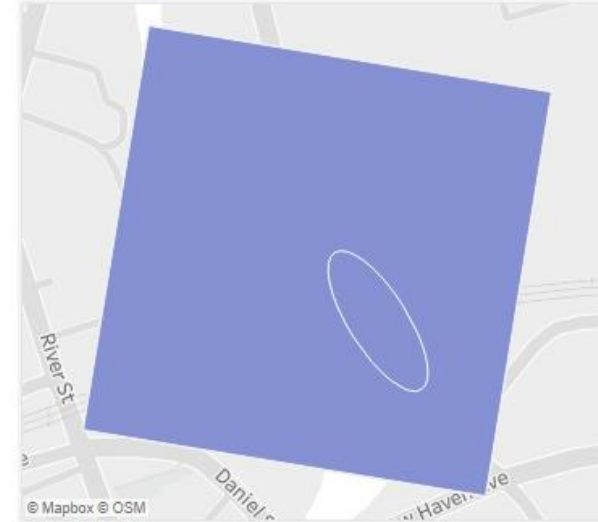
Potential Regional Adaptation/Resilience Opportunity Areas



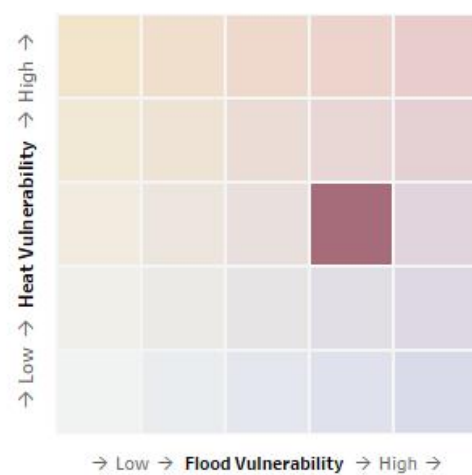
Zone of Shared Risk:
5307-00-490-0
Town: Milford



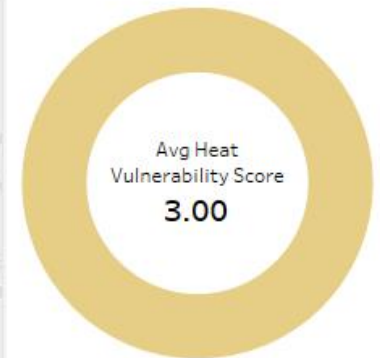
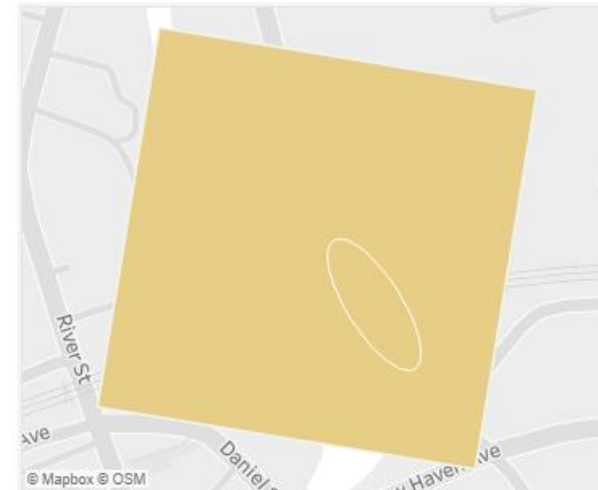
Flood Vulnerability



Combined Vulnerability



Heat Vulnerability



Resilient Connecticut Phase II

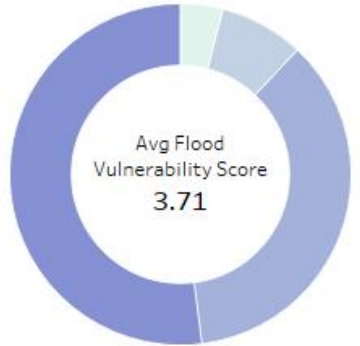
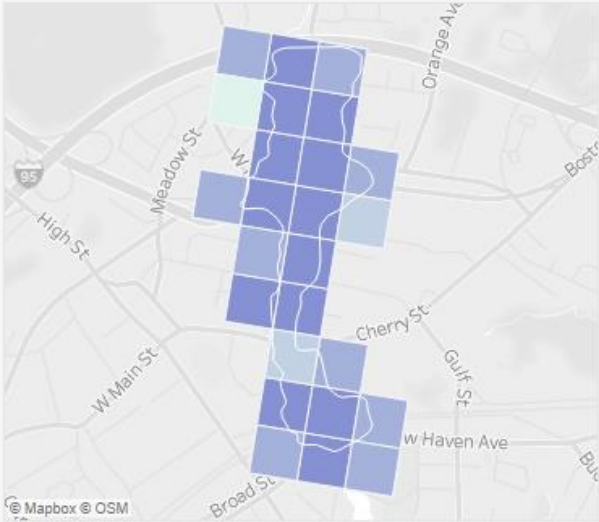
Potential Regional Adaptation/Resilience Opportunity Areas



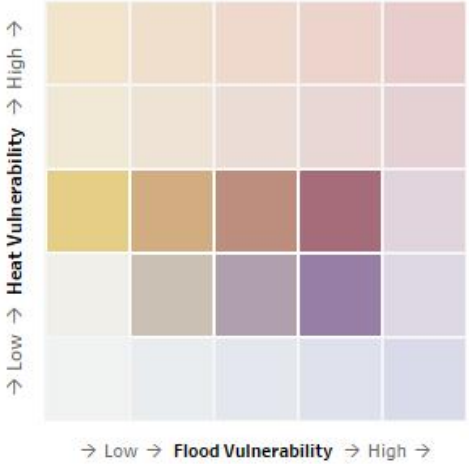
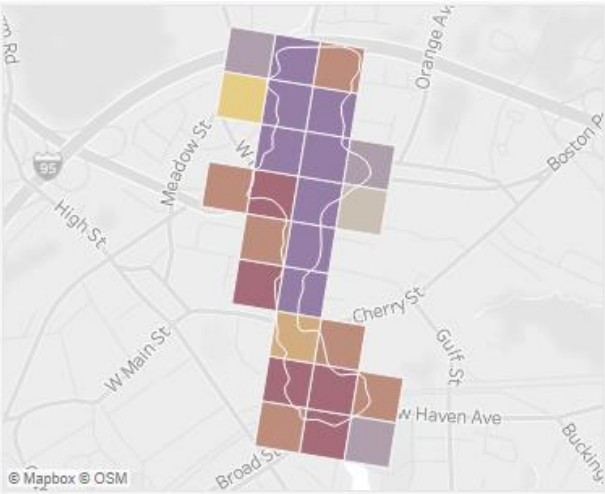
Zone of Shared Risk:
5307-00-381-0
Town: Milford



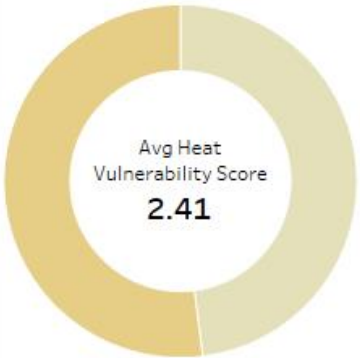
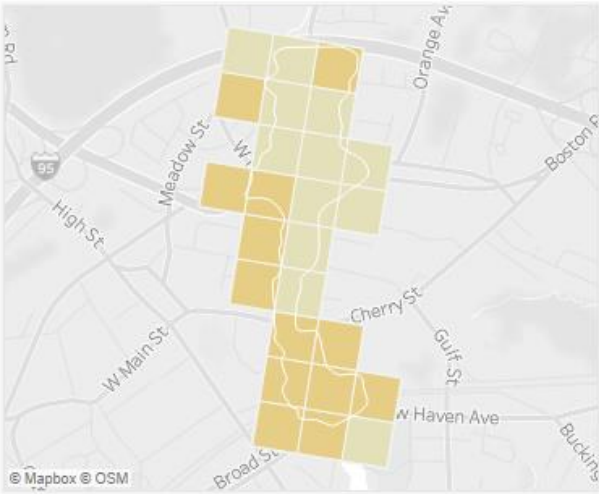
Flood Vulnerability



Combined Vulnerability



Heat Vulnerability



Resilient Connecticut Phase II

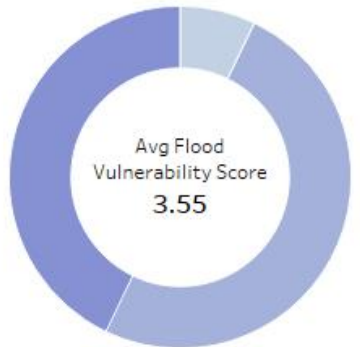
Potential Regional Adaptation/Resilience Opportunity Areas



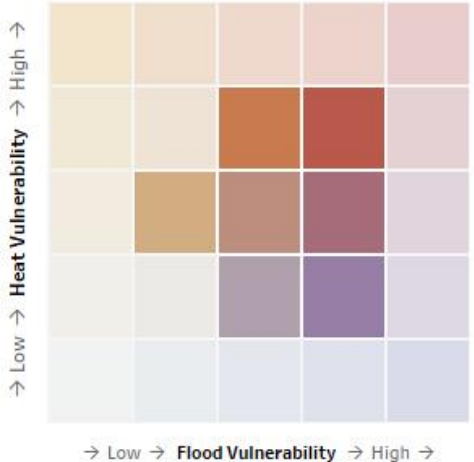
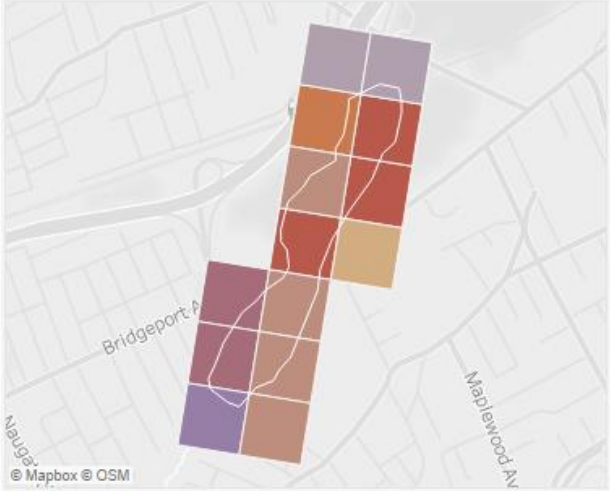
Zone of Shared Risk:
6000-87-518-0
Town: Milford



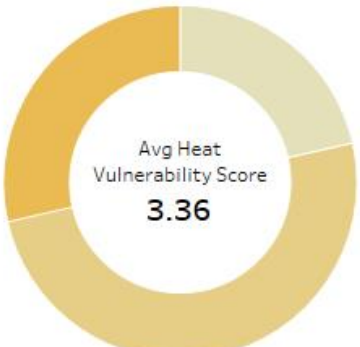
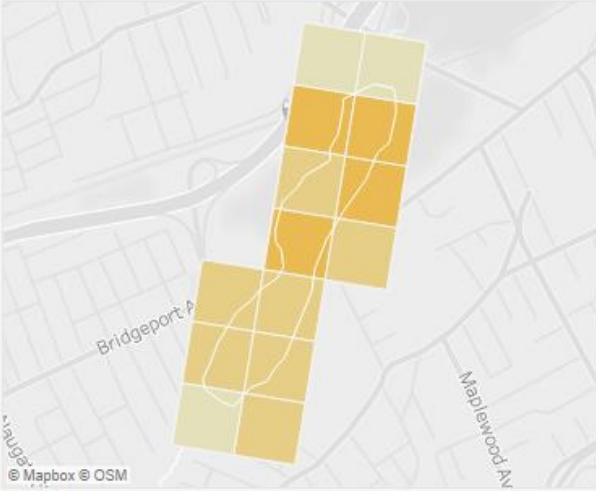
Flood Vulnerability



Combined Vulnerability



Heat Vulnerability



Resilient Connecticut Phase II

Potential Regional Adaptation/Resilience Opportunity Areas



Area #12
Name: Devon

Location: Milford
Tier 2

Considerations	Characteristics of Area
Flood Vulnerability	0.25 (moderate-high)
Heat Vulnerability	0.24 (moderate)
Social Vulnerability	0.47 (moderate)
Zone of Shared Risk	Housatonic River: 6000-87
Regional Infrastructure Present	MetroNorth/Amtrak, I-95, public water and sewer
Area of Planned Development Present	Corridor Zone
Federal Opportunity Zone Present	N/A
Transit-Oriented Development Area	N/A



Resilient Connecticut Phase II

Potential Regional Adaptation/Resilience Opportunity Areas



Report Out



Report Out

- **What are some of the key findings?**
(missing asset/infrastructure, prioritize asset/infrastructure,
- **What are the take-aways?**
(are some areas better opportunities, planning efforts/projects already under way, possible linkages with Resilient Connecticut and other efforts)
- **What should happen next?**
(identify other opportunity areas, project types, municipal or community engagement, explore specific vulnerabilities)

Resilient Connecticut Phase II

Potential Regional Adaptation/Resilience Opportunity Areas



Next Steps



Resilient Connecticut Phase II

Potential Regional Adaptation/Resilience Opportunity Areas



Next Steps

- Draft report of potential adaptation/resilience opportunities to be issued June 2021
 - ✓ Will describe the flood and heat CCVI tools, the zones of shared risk, the TOD area in the regions, regional assets and infrastructure, etc.
- Transition from Resilient Connecticut Phase II to Resilient Connecticut Phase III
 - ✓ CIRCA's Resilient Connecticut team will work with COGs, municipalities, and State agency partners to advance the Phase II planning in a number of these opportunity areas over the next two years.
 - ✓ CIRCA's Resilient Connecticut team will be looking for the opportunity areas where they can make the most impact and provide the most value (e.g. where planning gaps exist, where alignment can be drawn with COG and community priorities, and where local or state leverage is possible).
 - ✓ CIRCA will help identify other funding opportunities going forward.

Resilient Connecticut Phase II

Potential Regional Adaptation/Resilience Opportunity Areas

Examples of Adaptation and Resilience Projects



- What are the flood-related benefits?
- What are the heat-related benefits?
- What are the benefits to vulnerable populations?
- What is the connection to TOD and resilient corridors?

Example: Meriden Green – Flood Mitigation Project near Meriden TOD



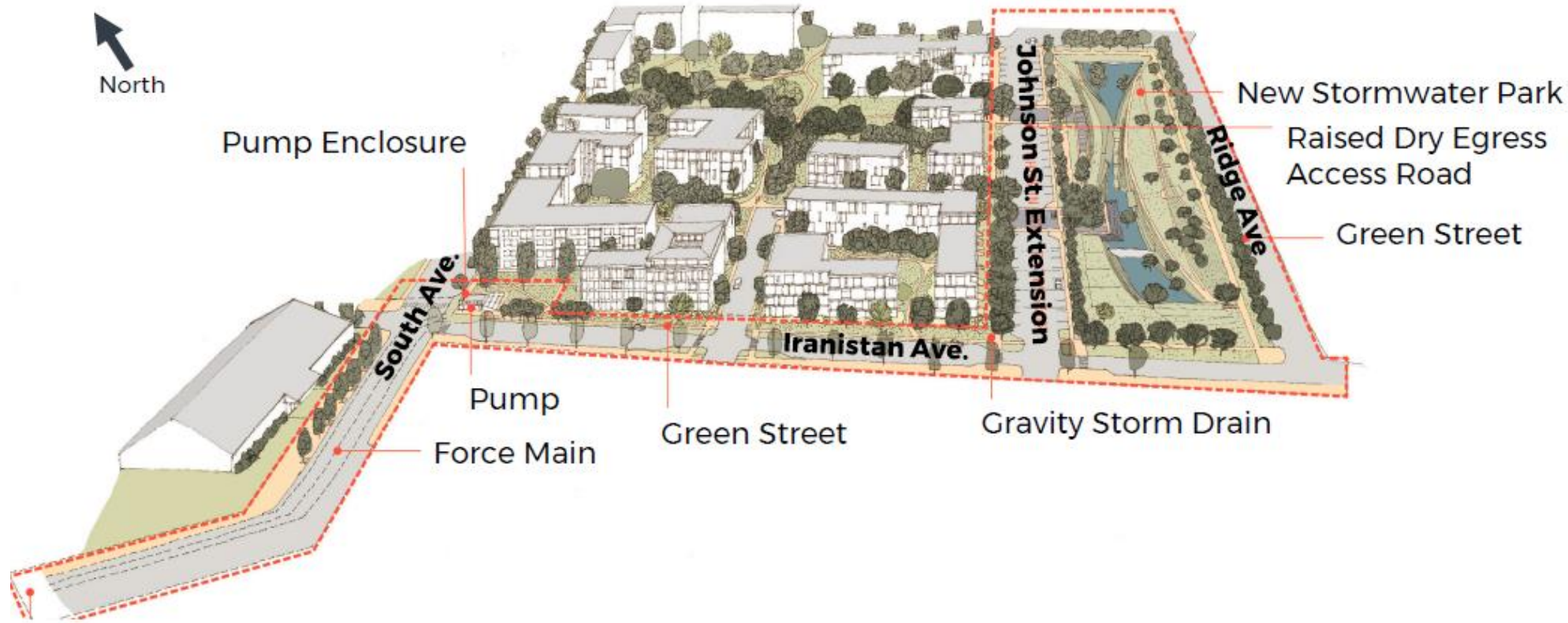
Examples of Adaptation and Resilience Projects



- What are the flood-related benefits?
- What are the heat-related benefits?
- What are the benefits to vulnerable populations?

Example: Resilient Bridgeport – Flood Protection System and Resilience Community Center

Examples of Adaptation and Resilience Projects



- What are the flood-related benefits?
- What are the heat-related benefits?
- What are the benefits to vulnerable populations?

Example: Rebuild By Design Bridgeport – Stormwater Management Improvements and Green Infrastructure

Resources

- Resilient Connecticut web site
<https://resilientconnecticut.uconn.edu/>
- Climate fact sheets
<https://resilientconnecticut.uconn.edu/2020/10/07/connecticut-climate-fact-sheets-now-available/>
- Climate Change Vulnerability Index (CCVI)
<https://resilientconnecticut.uconn.edu/ccvi/>
- Resilient Connecticut Story Map
<https://mminc.maps.arcgis.com/apps/MapSeries/index.html?appid=c700755a764e421596f9fa3719ea5262&folderid=f47a498583604f3f9601ce1de67f7407>